



A select portfolio of architectural mesh projects for new or refurbished elevator cabs, lobbies and high-traffic spaces featuring Cambridge's metal mesh.

Beautiful, light-weight and durable, architectural mesh has been prized by architects and designers since we first wove metal fabric for the elevator cabs in Mies van der Rohe's Seagram Building in 1958. And it's still there today. Learn more about our elite line of elegant panels in stainless steel, brass, copper and aluminum.

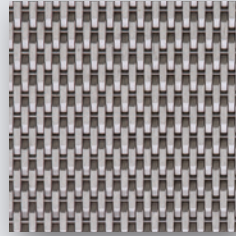
For more information: [CONTACT US](#)

1.866.806.2385 [sales@cambridgearchitectural.com](mailto:sales@cambridgearchitectural.com)

[Click on any headline to learn more.](#)



### Carnegie Hall, New York City



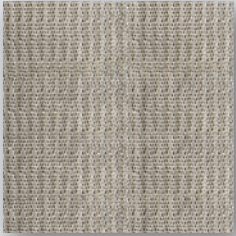
Elegant burnished aluminum panels lift Carnegie Hall's elevator interiors to another level.

Installed by EDI/ECI in concert with lu + Biblowicz Architects, Cambridge's Sawgrass pattern adds a refined and resilient interior to this refurbished masterpiece.



© Gbphoto27 | Dreamstime.com

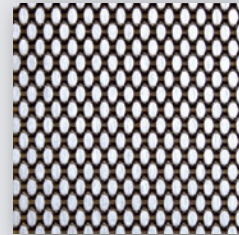
### Comcast Center, Philadelphia, PA



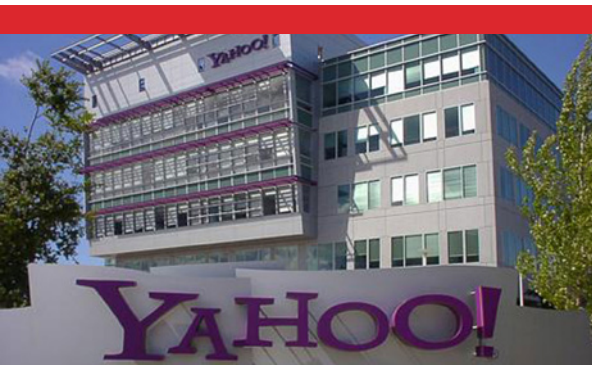
When designing the world's tallest green building, Robert A.M. Stern Architects added style and sustainability with Cambridge mesh. Classically outfitted with the chic Ritz pattern, the flexible stainless steel fabric integrates the lobby and elevators with a smooth and seamless design.



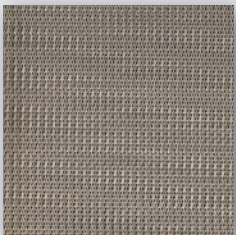
### Empire State Building, New York City



Beyer, Blinder & Belle Architects modernized the landmark skyscraper's elevator cabs with Cambridge's Stipple mesh. Installed by the National Elevator Cab & Door Co., the dappled brushed aluminum surface stands up to the traffic and traditions of this legendary building.



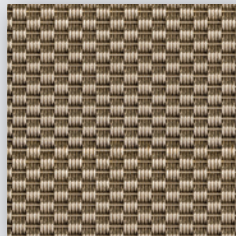
### YAHOO!, Sunnyvale, CA



Gensler architects selected Cambridge's Silk mesh to clad elevators at Yahoo's Silicon Valley headquarters. Installed by EuroCraft, the supple,

herringbone pattern adds a traditional touch to this high-tech powerhouse.

### Victory Plaza, Dallas, TX



TFO Architecture's expansive mixed-use project in the center of downtown incorporates one of Cambridge's most popular rigid mesh fabrics. With its

undulating waves of tightly woven metal mesh, Tidal, installed by The Beck Group, lines lobby walls, ceilings and elevator cabs to mirror the high-end styling of the award-winning building.



**Sustainable. Durable. Beautiful.**