



FROM INSPIRATION TO REALIZATION

CAMBRIDGE ARCHITECTURAL MESH

On the cover:
QEII Parkade
Halifax, Nova Scotia
Architect: WalterFedy
Kitchener, Ontario

Perhaps it's an ability to be open, yet closed, at once. To reflect light directly and indirectly, brilliantly and diffusely, together. To be rigid or flexible. Or, to be geometrically simplistic at a distance, yet vexingly complex up close. Perhaps, it's all of these unique characteristics at work.

Whatever the reason, what's undeniable is woven metal fabric's uncanny knack for inspiring creative minds. Which is precisely where Cambridge Architectural Mesh comes in: to ensure that architects and designers have the knowledge, products, systems, and support to transform visionary designs of today into lasting architectural realities of tomorrow.

Welcome to Cambridge Architectural Mesh!

About Us	2
Product Portfolio	5
Mesh Index	6
Mesh Patterns.....	8
Attachments	23
Pre-Engineered.....	27
Materials & Finishes	34
Iron Horse Trail Pedestrian Bridge.....	35

"The mesh allowed us to do the seemingly impossible: create a single element that could function as both a solid wall and open window."

Danny Forster, principal of
Danny Forster Design Studios

Courtyard by Marriott®*,
New York City, New York >



*This trademark or trade name is owned or controlled by a third party and is not owned or controlled by Regal Rexnord Corporation or its affiliates.

AN AMERICAN ORIGINAL

Cambridge Architectural collaborates closely with architects, designers, and contractors to specify, customize, and install woven metal into the built environment in ways that are both aesthetic and functional.

HERITAGE

Cambridge Architectural evolved from a world-renowned American industrial wire belt manufacturer with a century of successful engineered solutions. The company’s first architectural application was installed in 1957 at the Seagram Building in New York City (cladding for the building’s elevator cabs that remain in place today). After four decades of market experience, the Cambridge Architectural division was officially established in 2002. In October 2021, Cambridge International, Inc., which produces Cambridge Architectural Mesh became part of the Regal Rexnord Corporation.



Near the shores of Maryland’s Chesapeake Bay, historic Cambridge is home to fourth-generation artisans and professionals dedicated to making woven metal mesh the hallmark of beautiful, durable and sustainable environments.



While Cambridge Architectural Mesh is a recognized global leader, our roots were planted 100 years ago in this small town we still call home. Our manufacturing experience and passion for excellence is evident in the hands and on the faces of every craftsman who weaves our metal fabrics.



EXPERTISE

Having established a leading position in the marketplace, Cambridge’s expertise extends far beyond materials manufacturing. Our 300+ employees call on collective and progressive experience with every facet of design, engineering and fabrication at each stage of every project. Cambridge provides full-scale project management and engineering services with access to hundreds of skilled craftsmen, creative minds, and market experts to execute the architect’s or designer’s vision.

GLOBAL

Today, Cambridge clients benefit from the company’s global manufacturing operations in combination with its North American headquarters, offering full-service consultation services, research and development, engineering, prototyping, and more. Our expanding international portfolio in Europe, the Middle East and Latin America has introduced Cambridge’s ingenuity and know-how to these expanding markets.

EDUCATION

As trailblazers, Cambridge Architectural places high value on continuing education and offers AIA-certified CEU courses that allow architects to receive LU/SD/HSW credits.

We also offer a Cambridge CPD seminar for British architects through RIBA under the Designing and Building It curriculum.

SUSTAINABILITY

As a member of the United States Green Building Council, Cambridge is committed to promoting methods, technology and products resulting in environmentally responsible and healthy buildings. Select Cambridge staff members receive ongoing education and training on pertinent issues. This team, in turn, develops systems that meet or exceed LEED requirements and provides consultation and direction on a project-by-project basis.



WOVEN METAL FABRIC

Each distinct pattern of Cambridge woven metal fabric is itself a work of art, designed with a specific geometry, open area, dimension, and flexibility. Woven by skilled artisans from a multitude of combinations of highly durable, yet readily recyclable metals, including stainless, and brass, metal fabric is an intrinsically sustainable building material.

ARCHITECTURAL FUNCTIONS

The visual beauty of woven metal usually upstages the material's critical functional offerings. These include: solar shading, acoustic transparency, ventilation, security and safety, space sculpting, and masking.

ANY BUILDING TYPE

From parking garages and pedestrian bridges, to performing arts venues and major sports complexes, Cambridge metal fabrics are gracing structures across the country and around the world. Woven through interiors and exteriors of museums, libraries, hospitals, research centers, universities, casinos, stadiums, hotels, retail establishments, government facilities, and religious facilities, Cambridge mesh is transforming the ordinary into the extraordinary.



^ Ohlone College, Fremont, California
Architect: ABA

ENGINEERED ATTACHMENT SYSTEMS

Cambridge offers a large variety of flexible and rigid mesh patterns as well as the best-engineered attachment systems in the industry. Cambridge continually develops new mesh patterns, finishes, attachment systems, and innovative ways to use mesh material to achieve certain architectural looks or functionalities.

A complete product catalog begins on **page 8**.

POPULAR APPLICATIONS:

- Canopies
- Ceilings
- Curtains
- Elevators
- Facades
- Handrail Infills
- Parking Facilities
- Solar Shading
- Security Screens
- Signage
- Stair Towers
- Wall Cladding



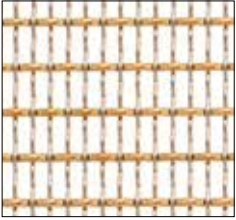
Thornton Flats, Austin, Texas
Architect: StoryBuilt

Cambridge Mesh Systems

TABLE OF CONTENTS

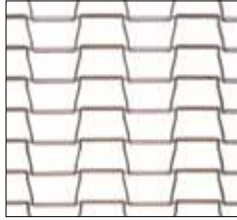
Mesh Index.....	6
Mesh Patterns	8
Attachments	23
Pre-Engineered	27
Materials & Finishes	34

BEAD



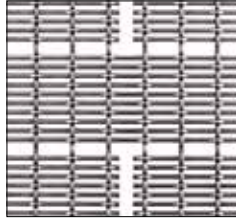
PAGE 37

BISCAYNE



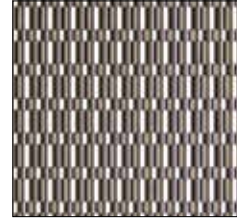
PAGE 32

BRICK



PAGE 37

CHANNEL



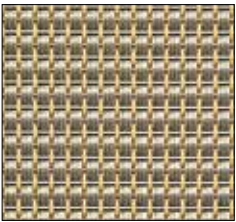
PAGE 40

CHAOS



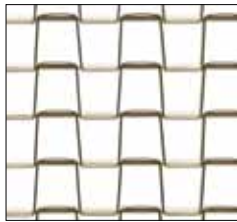
PAGE 36

CIRCUIT



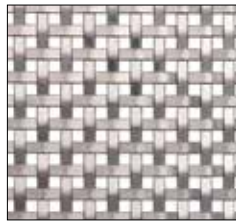
PAGE 39

CUBIST



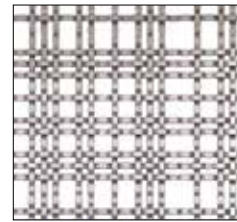
PAGE 31

GRAPH



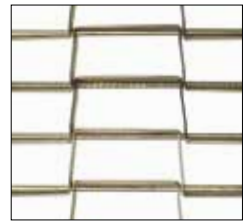
PAGE 35

HASHTAG



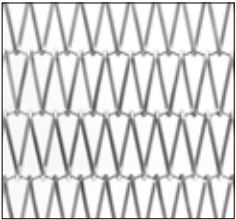
PAGE 36

HUDSON



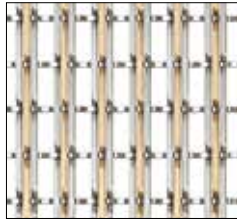
PAGE 31

HURON



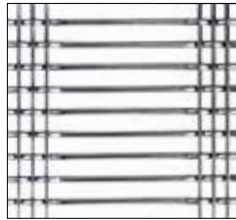
PAGE 28

INFINITY



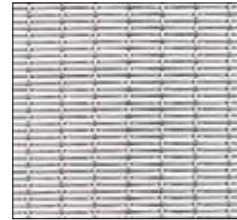
PAGE 38

KENSICO



PAGE 32

LANIER



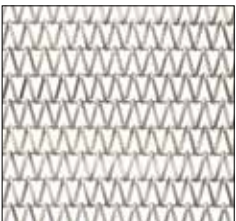
PAGE 33

MID-BALANCE



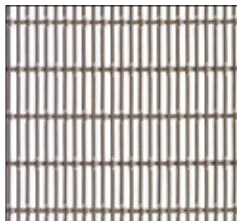
PAGE 30

MID-SHADE



PAGE 29

PLANK



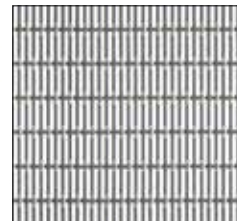
PAGE 33

PLAZA



PAGE 42

RIDGE



PAGE 34

RITZ



PAGE 38

SAWGRASS



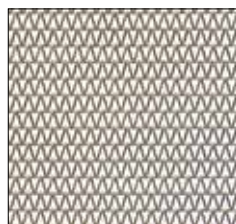
PAGE 41

SCALE



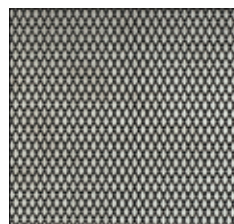
PAGE 30

SHADE



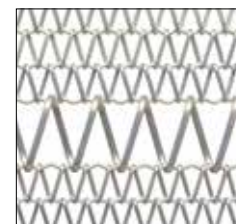
PAGE 29

STIPPLE



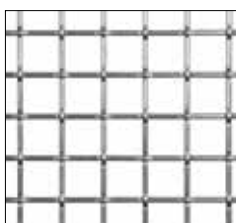
PAGE 41

STRIPE



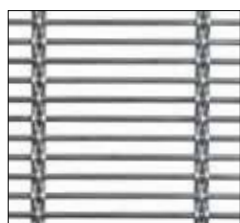
PAGE 28

TARTAN



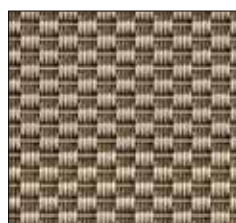
PAGE 35

THATCH



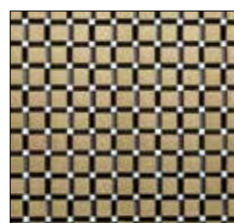
PAGE 34

TIDAL



PAGE 39

TILE



PAGE 40

VILLA



PAGE 42

BUILD-A-PATTERN

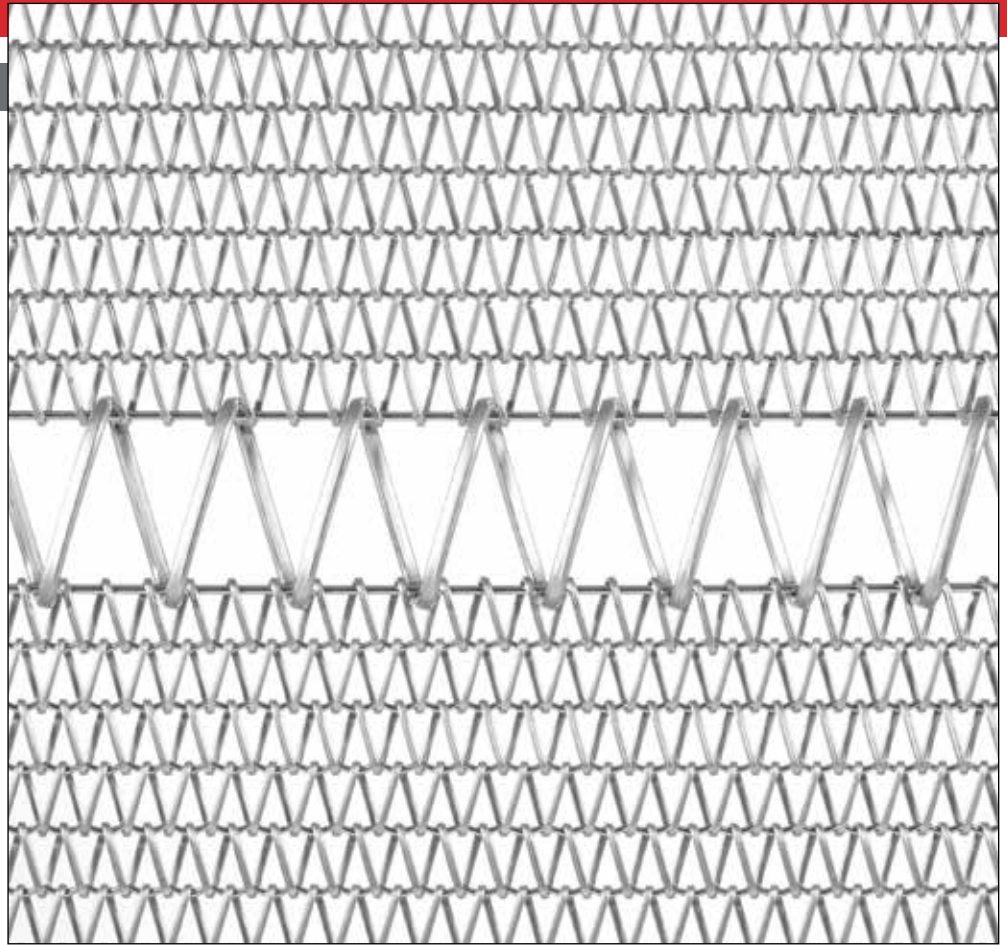
NEW SERVICE ALLOWS ARCHITECTS TO CREATE CUSTOM DESIGNS

Developed in conjunction with architects looking to produce varying aesthetic and shade characteristics, Cambridge introduced Build-A-Pattern to allow designers the ability to configure customized patterns by weaving multiple woven wire mesh products. Integrating standard Cambridge patterns — for example those having tighter weaves with those featuring more open area — have created dramatic visual results on projects as varied as a pedestrian bridge at the Dallas Area Rapid Transit, Market Center Station^{®*}, the facade of the West Career & Technical Academy in Las Vegas and The Universities at Shady Grove in Rockville, Maryland.

What would you like to build?

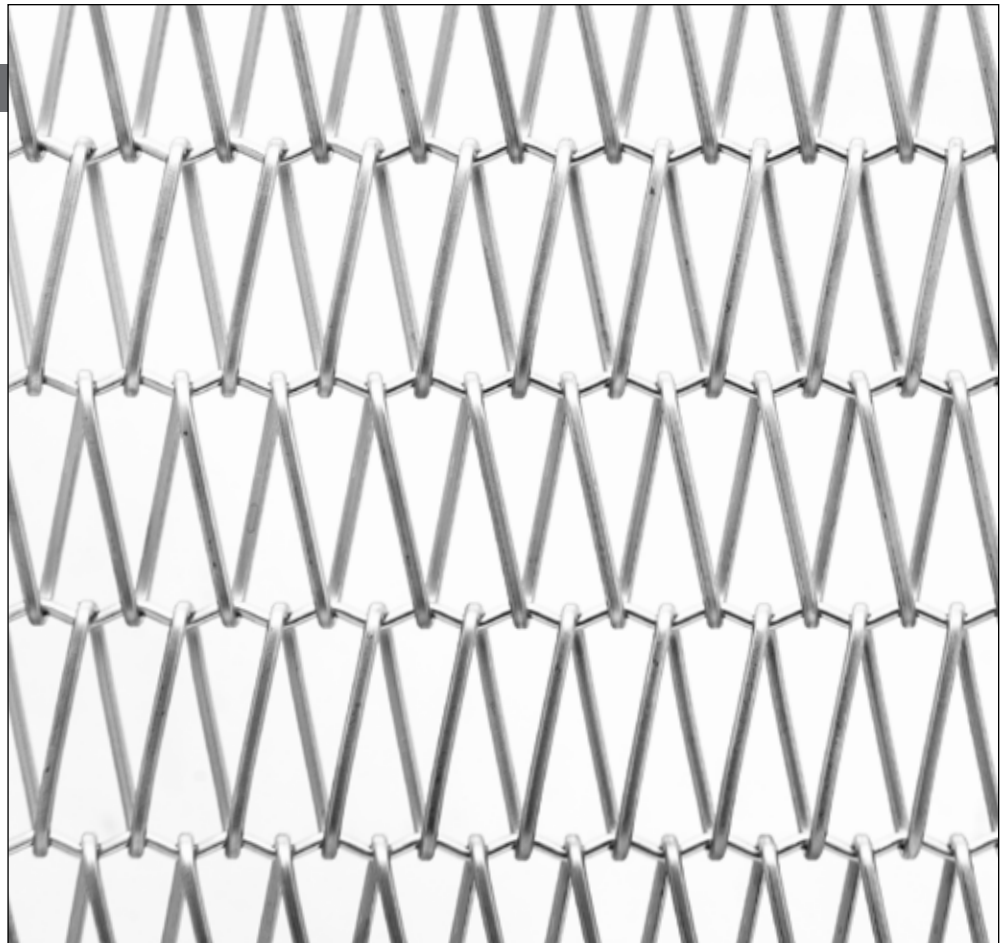
STRIPE

FLEXIBLE MESH		
Open Area	53%	
Weight in SS	1.68 lbs/SF	8.18 kg/m ²
Thickness	0.55 inches	14 mm
Max Width	180 inches	4.57 meters
Max Length	100 feet	30.48 meters
Width Tolerance	+/- 0.5 inches	+/- 13 mm
Length Tolerance	+/- 1 inch	+/- 25 mm

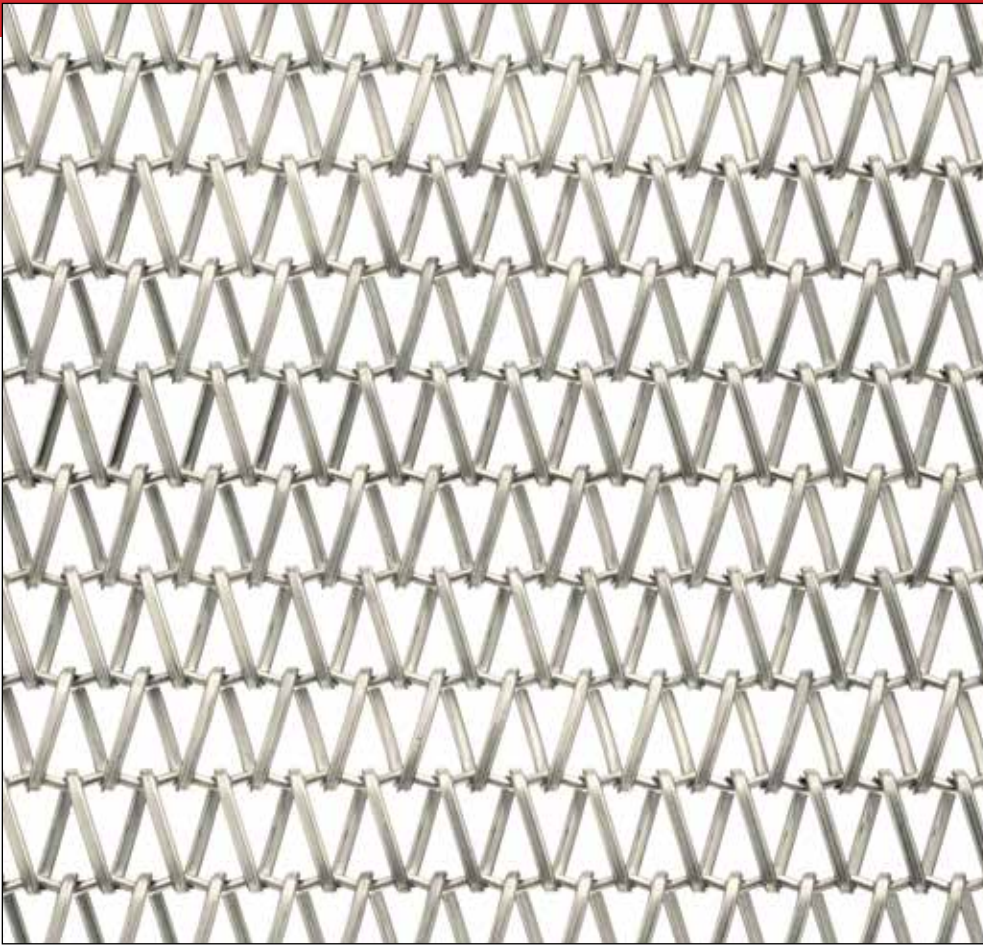


HURON

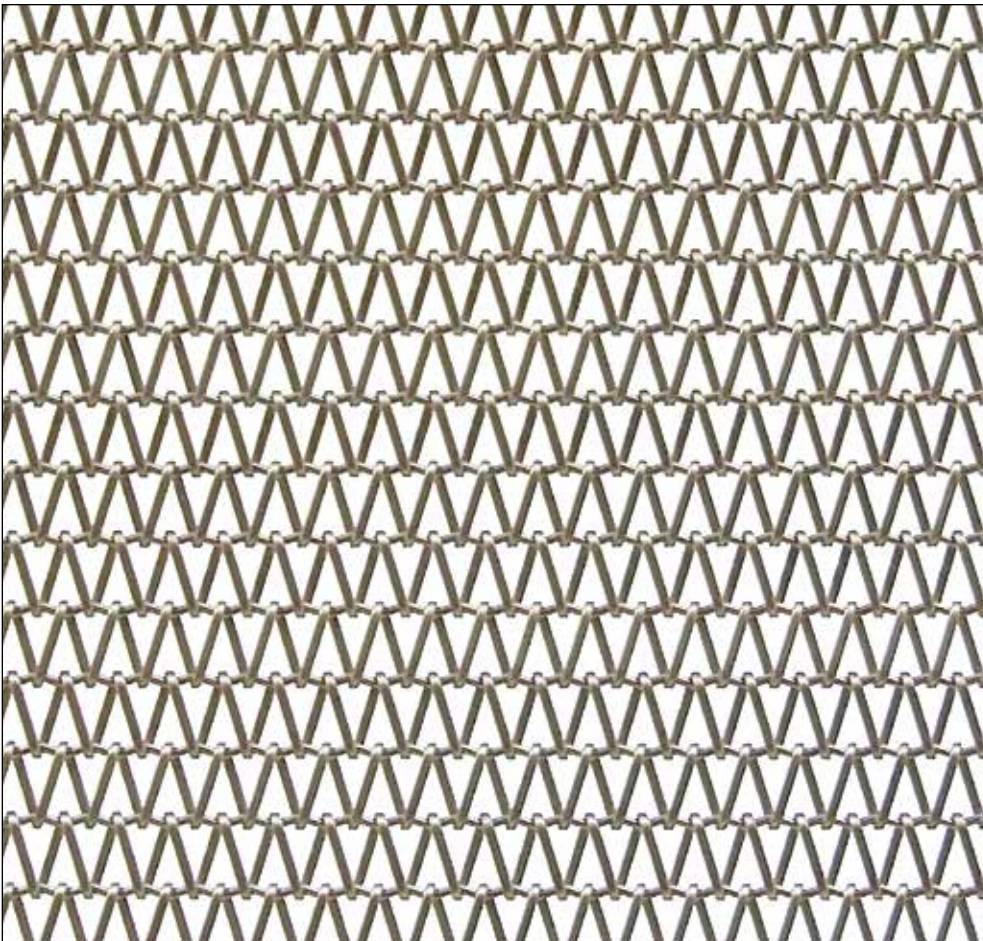
FLEXIBLE MESH		
Open Area	55%	
Weight in SS	1.31 lbs/SF	6.40 kg/m ²
Thickness	0.350 inches	8.89 mm
Max Width	180 inches	4.57 meters
Max Length	100 feet	30.48 meters
Width Tolerance	+/- 0.5 inches	+/- 13 mm
Length Tolerance	+/- 1 inch	+/- 25 mm



MID-SHADE



FLEXIBLE MESH		
Open Area	42%	
Weight in SS	1.40 lbs/SF	6.84 kg/m ²
Thickness	0.252 inches	6.4 mm
Max Width	180 inches	4.57 meters
Max Length	100 feet	30.48 meters
Width Tolerance	+/- 0.5 inches	+/- 13 mm
Length Tolerance	+/- 1 inch	+/- 25 mm

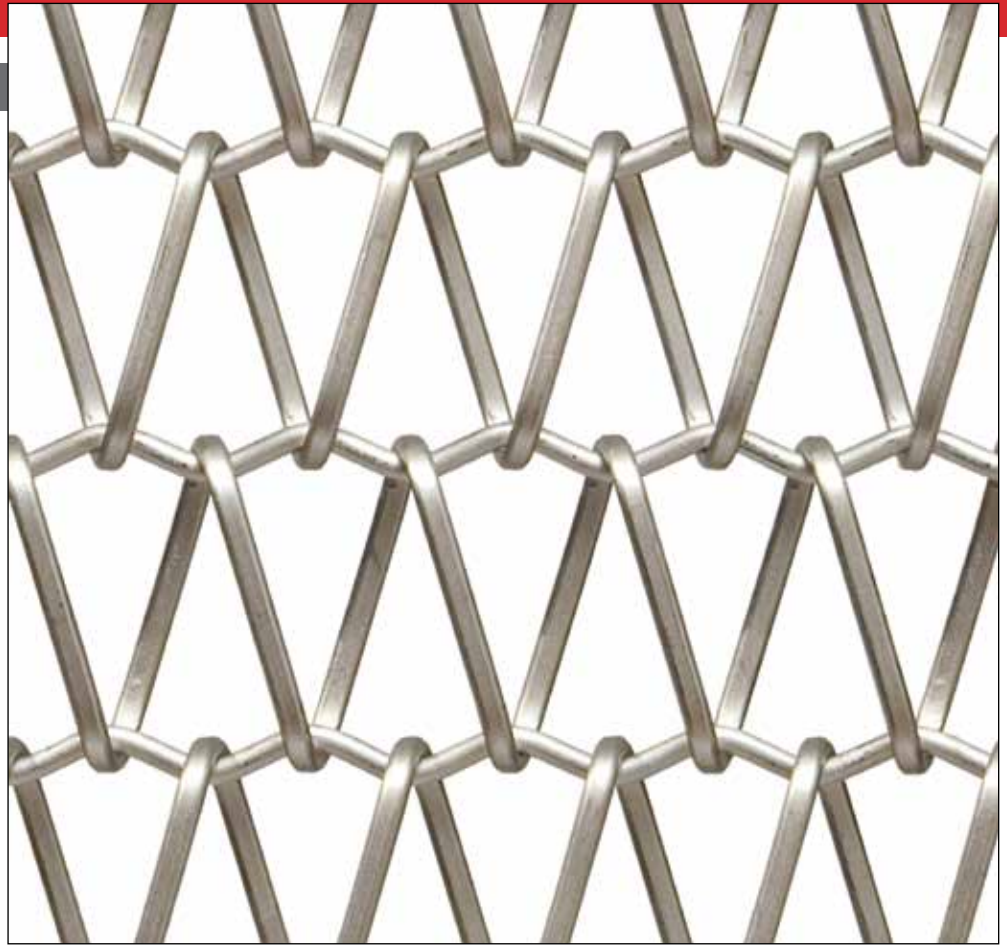


SHADE

FLEXIBLE MESH		
Open Area	41%	
Weight in SS	0.94 lbs/SF	4.59 kg/m ²
Thickness	0.168 inches	4.3 mm
Max Width	180 inches	4.57 meters
Max Length	100 feet	30.48 meters
Width Tolerance	+/- 0.375 inches	+/- 10 mm
Length Tolerance	+/- 0.375 inches	+/- 10 mm

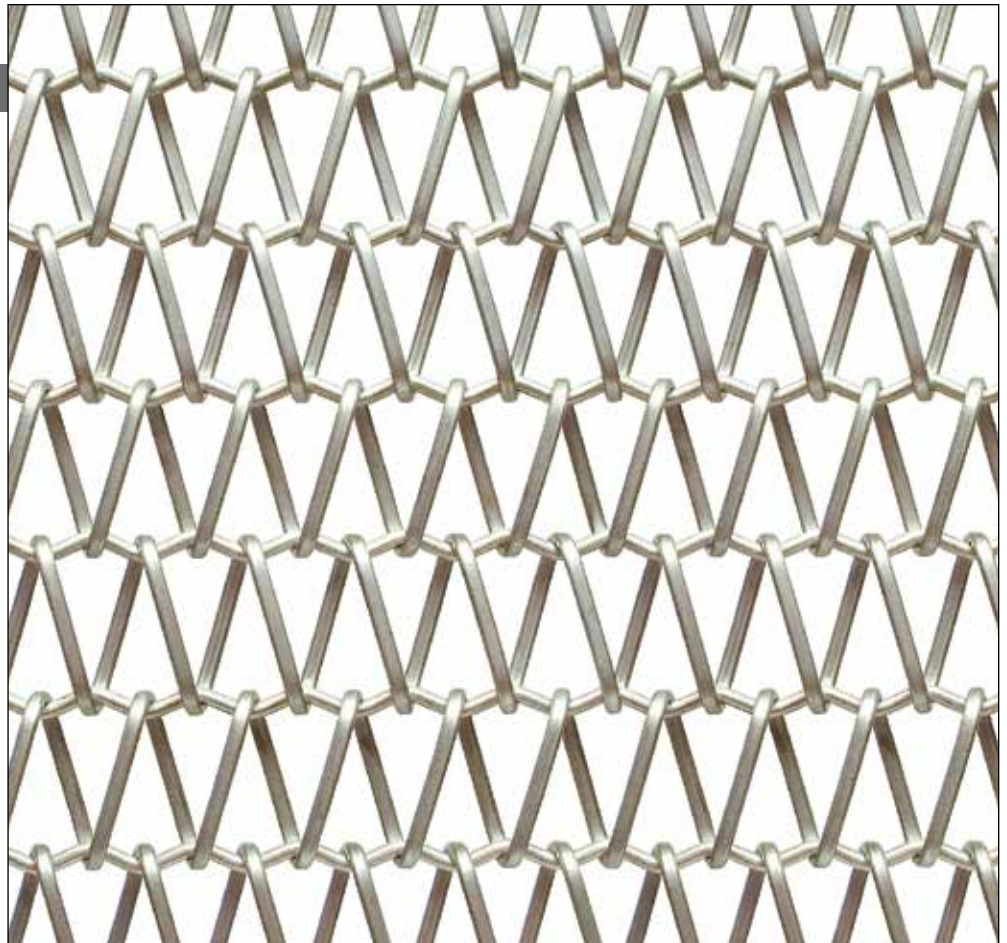
SCALE

FLEXIBLE MESH		
Open Area	59%	
Weight in SS	1.94 lbs/SF	9.47 kg/m ²
Thickness	0.55 inches	14 mm
Max Width	180 inches	4.57 meters
Max Length	100 feet	30.48 meters
Width Tolerance	+/- 0.5 inches	+/- 13 mm
Length Tolerance	+/- 1 inch	+/- 25 mm



MID-BALANCE

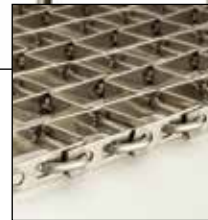
FLEXIBLE MESH		
Open Area	50%	
Weight in SS	1.57 lbs/SF	7.67 kg/m ²
Thickness	0.304 inches	7.7 mm
Max Width	180 inches	4.57 meters
Max Length	100 feet	30.48 meters
Width Tolerance	+/- 0.5 inches	+/- 13 mm
Length Tolerance	+/- 1 inch	+/- 25 mm



CUBIST



3-D VIEW



3-D VIEW

FLEXIBLE MESH

Open Area	80%	
Weight in SS	1.81 lbs/SF	8.84 kg/m ²
Thickness	0.375 inches	9.5 mm
Max Width	179 inches	4.55 meters
Max Length	100 feet	30.48 meters
Width Tolerance	+/- 1 inch	+/- 25 mm
Length Tolerance	+/- 1 inch	+/- 25 mm

HUDSON

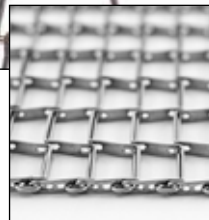
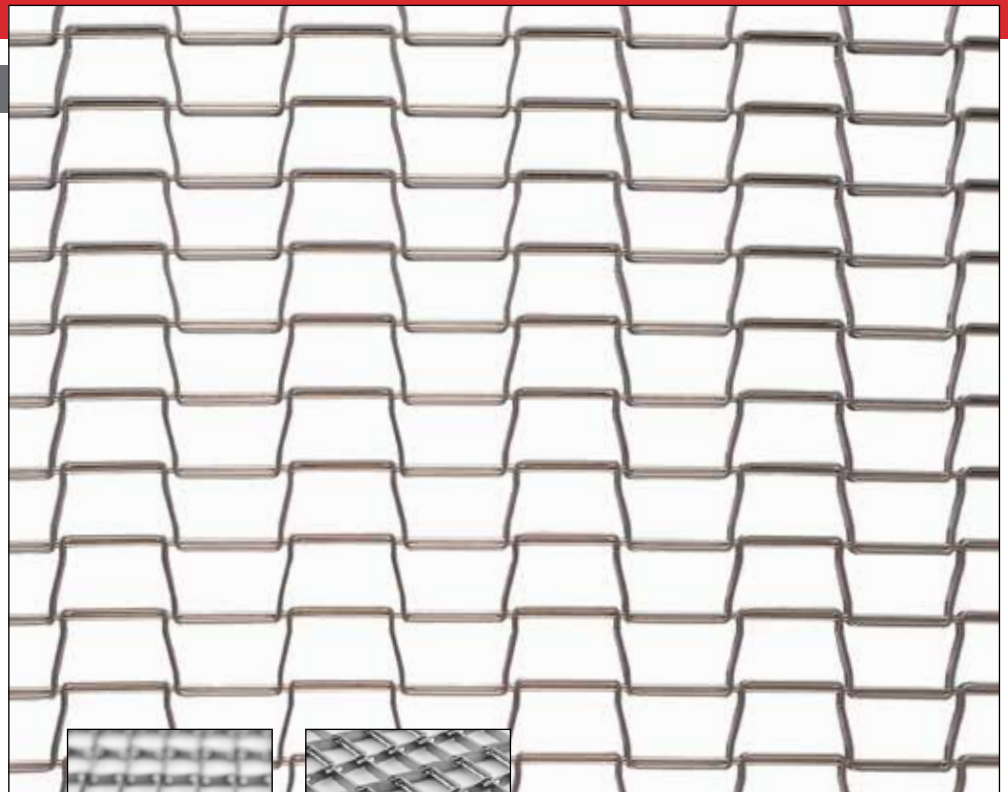


FLEXIBLE MESH

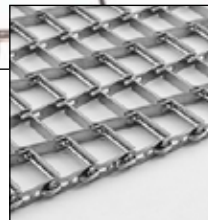
Open Area	82%	
Weight in SS	1.46 lbs/SF	7.13 kg/m ²
Thickness	0.375 inches	9.5 mm
Max Width	118 inches	3.00 meters
Max Length	100 feet	30.48 meters
Width Tolerance	+/- 2 inches	+/- 51 mm
Length Tolerance	+/- 1 inch	+/- 25 mm

BISCAYNE

FLEXIBLE MESH		
Open Area	78%	
Weight in SS	0.80 lbs/SF	3.91 kg/m ²
Thickness	0.162 inches	4.11 mm
Max Width	120 inches	3.05 meters
Max Length	100 feet	30.48 meters
Width Tolerance	+/- 0.75 inches	+/- 19 mm
Length Tolerance	+/- 0.5 inches	+/- 13 mm



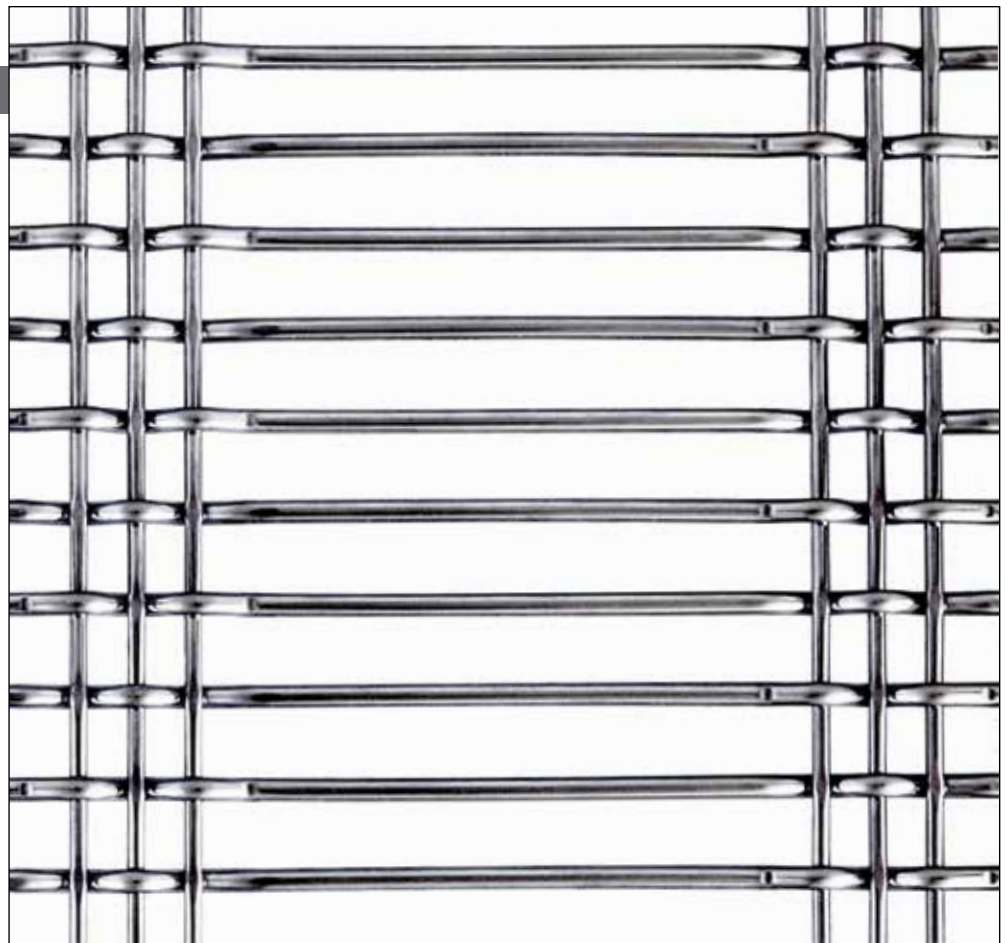
3-D VIEW



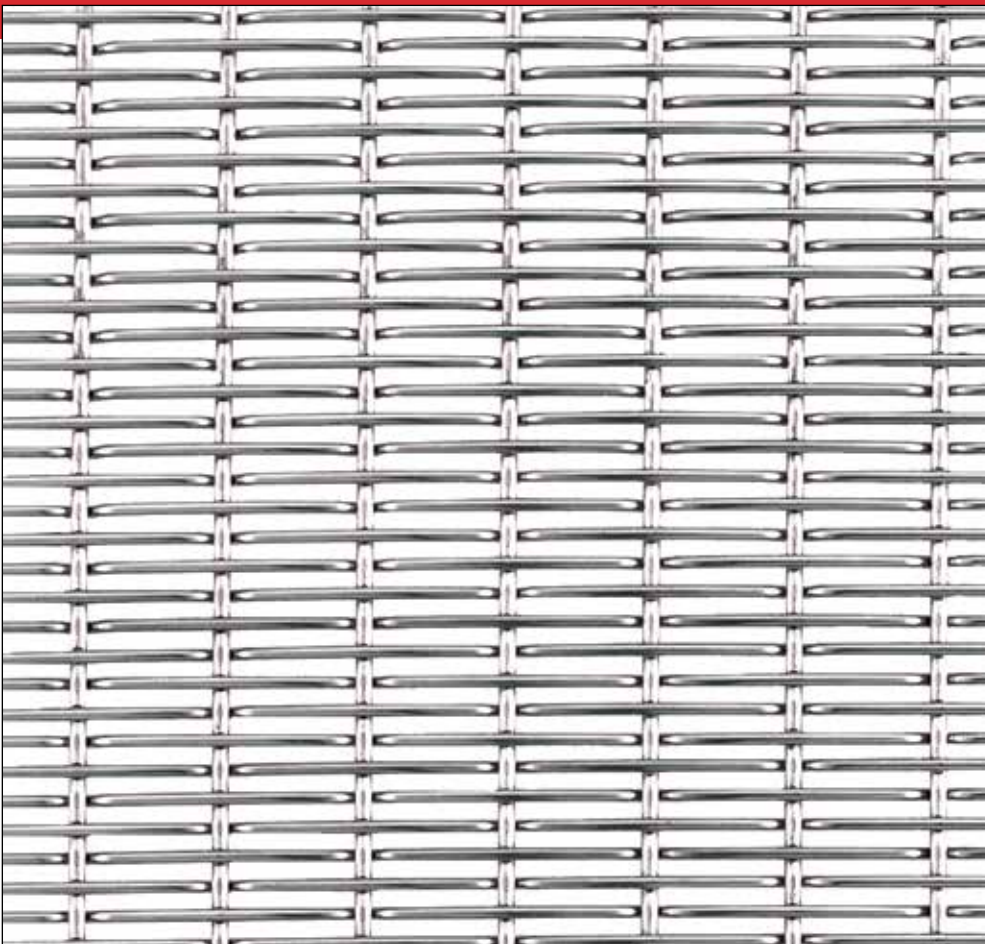
3-D VIEW

KENSICO

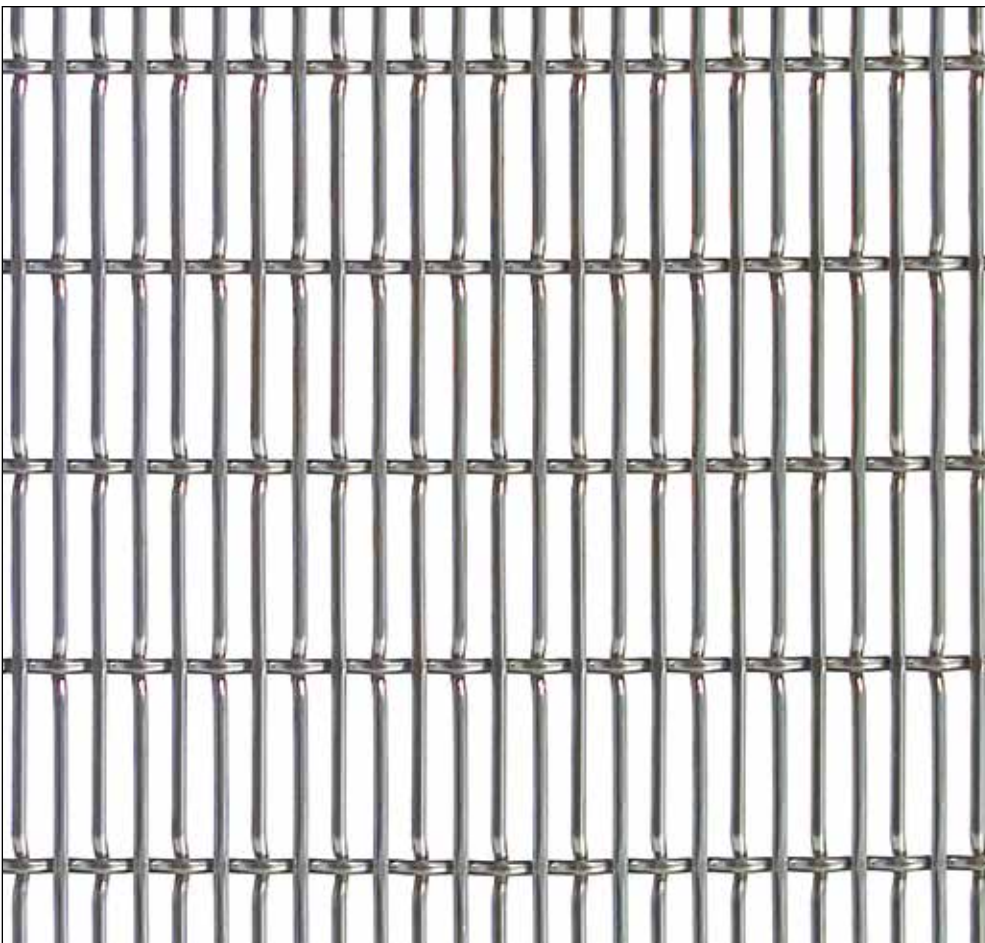
RIGID MESH		
Open Area	66%	
Weight in SS	1.32 lbs/SF	6.44 kg/m ²
Thickness	0.332 inches	8.4 mm
Max Width	116 inches	2.95 meters
Max Length	50 feet	15.24 meters
Width Tolerance	+/- 0.25 inches	+/- 6 mm
Length Tolerance	+/- 0.5 inches	+/- 13 mm



LANIER



RIGID MESH		
Open Area	48%	
Weight in SS	1.28 lbs/SF	6.25 kg/m ²
Thickness	0.182 inches	4.6 mm
Max Width	116 inches	2.95 meters
Max Length	50 feet	15.24 meters
Width Tolerance	+/- 0.25 inches	+/- 6 mm
Length Tolerance	+/- 0.5 inches	+/- 13 mm

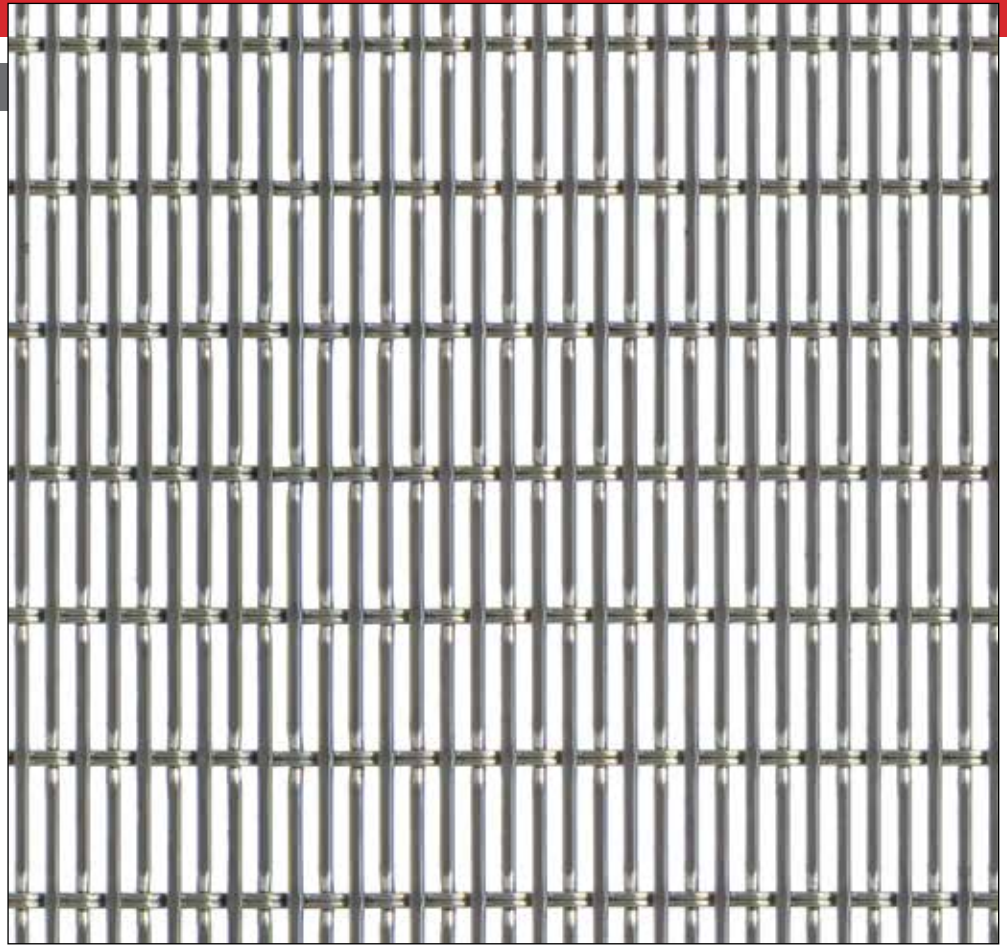


PLANK

RIGID MESH		
Open Area	56%	
Weight in SS	1.30 lbs/SF	6.35 kg/m ²
Thickness	0.164 inches	4.2 mm
Max Width	116 inches	2.94 meters
Max Length	50 feet	15.24 meters
Width Tolerance	+/- 0.25 inches	+/- 6 mm
Length Tolerance	+/- 0.25 inches	+/- 6 mm

RIDGE

RIGID MESH		
Open Area	40%	
Weight in SS	1.48 lbs/SF	7.23 kg/m ²
Thickness	0.130 inches	3.3 mm
Max Width	116 inches	2.94 meters
Max Length	50 feet	15.24 meters
Width Tolerance	+/- 0.25 inches	+/- 6 mm
Length Tolerance	+/- 0.25 inches	+/- 6 mm

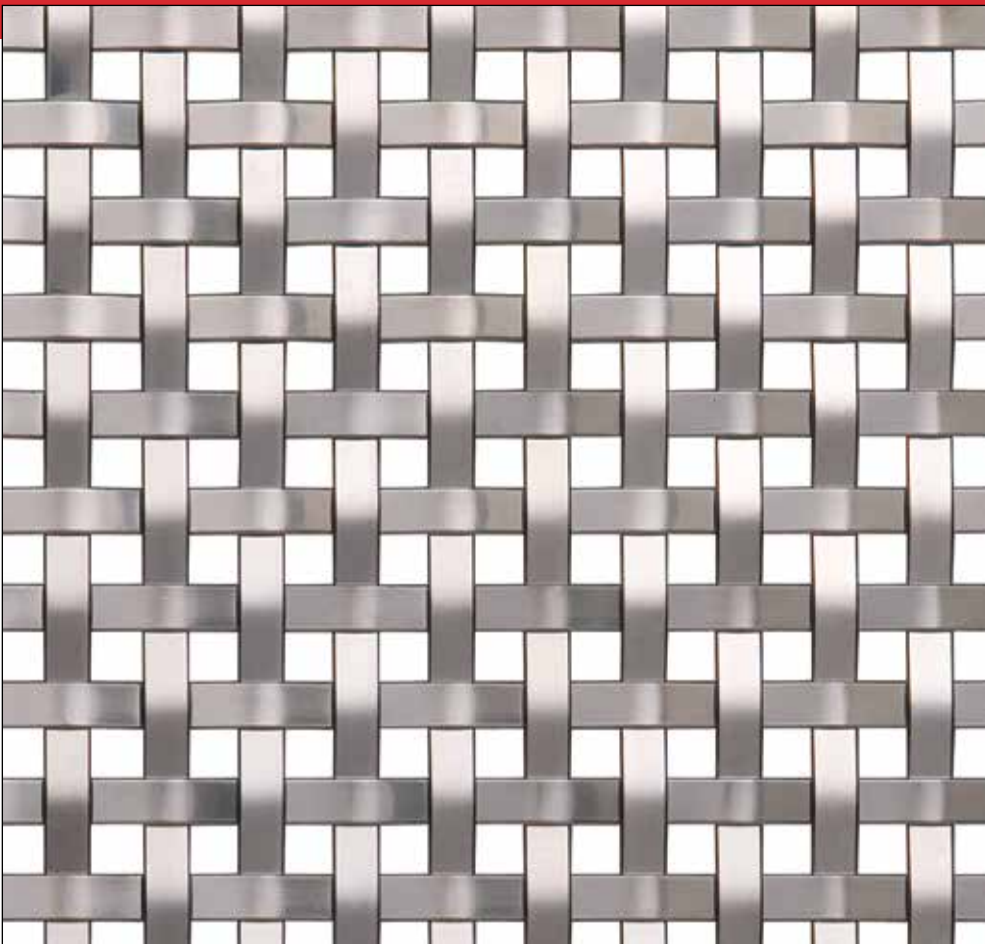


THATCH

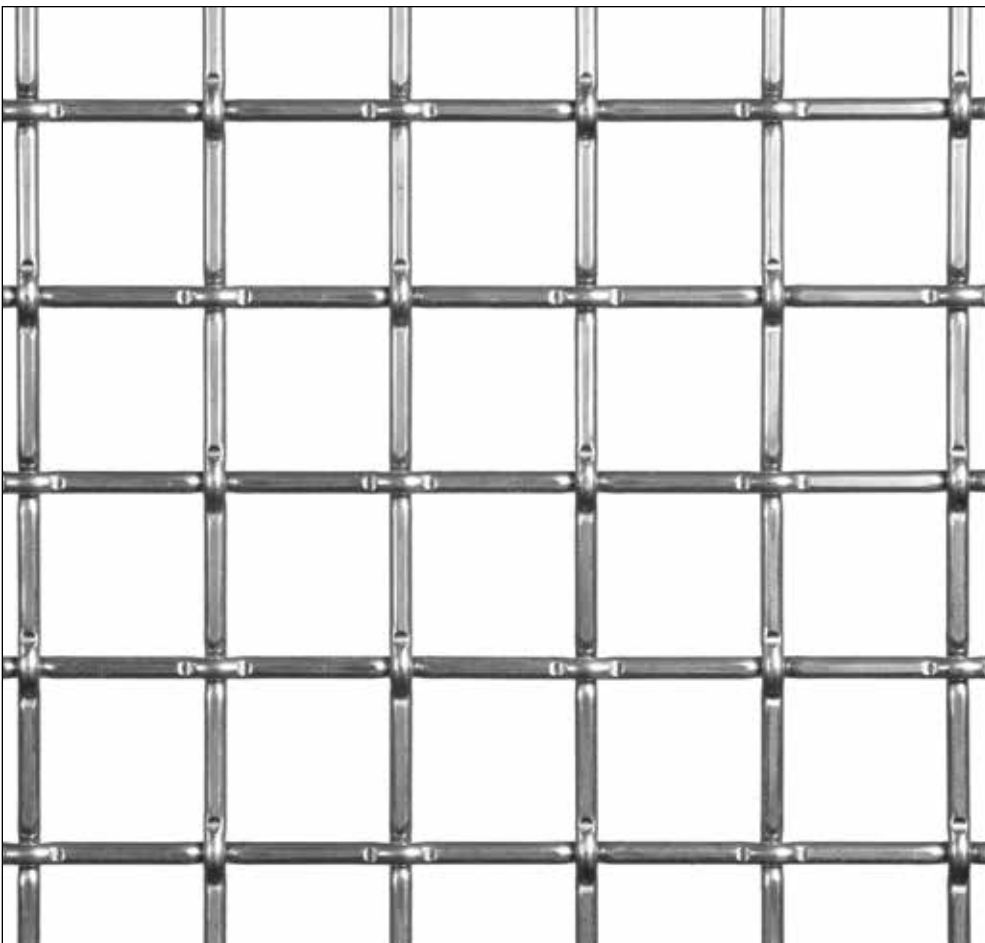
RIGID MESH		
Open Area	62%	
Weight in SS	1.50 lbs/SF	7.32 kg/m ²
Thickness	.265 inches	6.7 mm
Max Width	240 inches	6.10 meters
Max Length	9.67 feet	2.95 meters
Width Tolerance	+/- 0.25 inches	+/- 6 mm
Length Tolerance	+/- 0.5 inches	+/- 13 mm



GRAPH



RIGID MESH		
Open Area	25%	
Weight in SS	1.90 lbs/SF	9.28 kg/m ²
Thickness	0.105 inches	2.7 mm
Max Width	72 inches	2.95 meters
Max Length	14 feet	15.24 meters
Width Tolerance	+/- 0.25 inches	+/- 6 mm
Length Tolerance	+/- 0.25 inches	+/- 6 mm



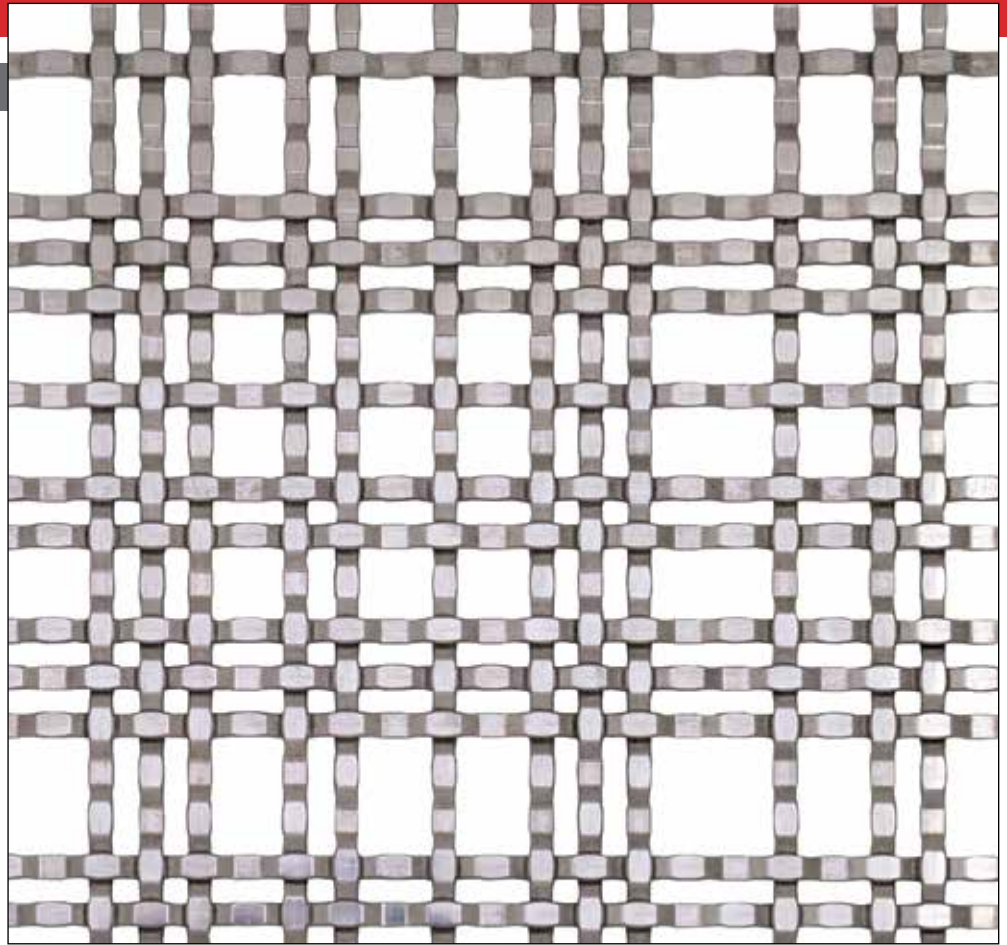
TARTAN

RIGID MESH		
Open Area	77%	
Weight in SS	1.00 lbs/SF	4.88 kg/m ²
Thickness	.240 inches	6.1 mm
Max Width	116 inches	2.95 meters
Max Length	50 feet	15.24 meters
Width Tolerance	+/- 0.25 inches	+/- 6 mm
Length Tolerance	+/- 0.25 inches	+/- 6 mm

MESH PATTERNS

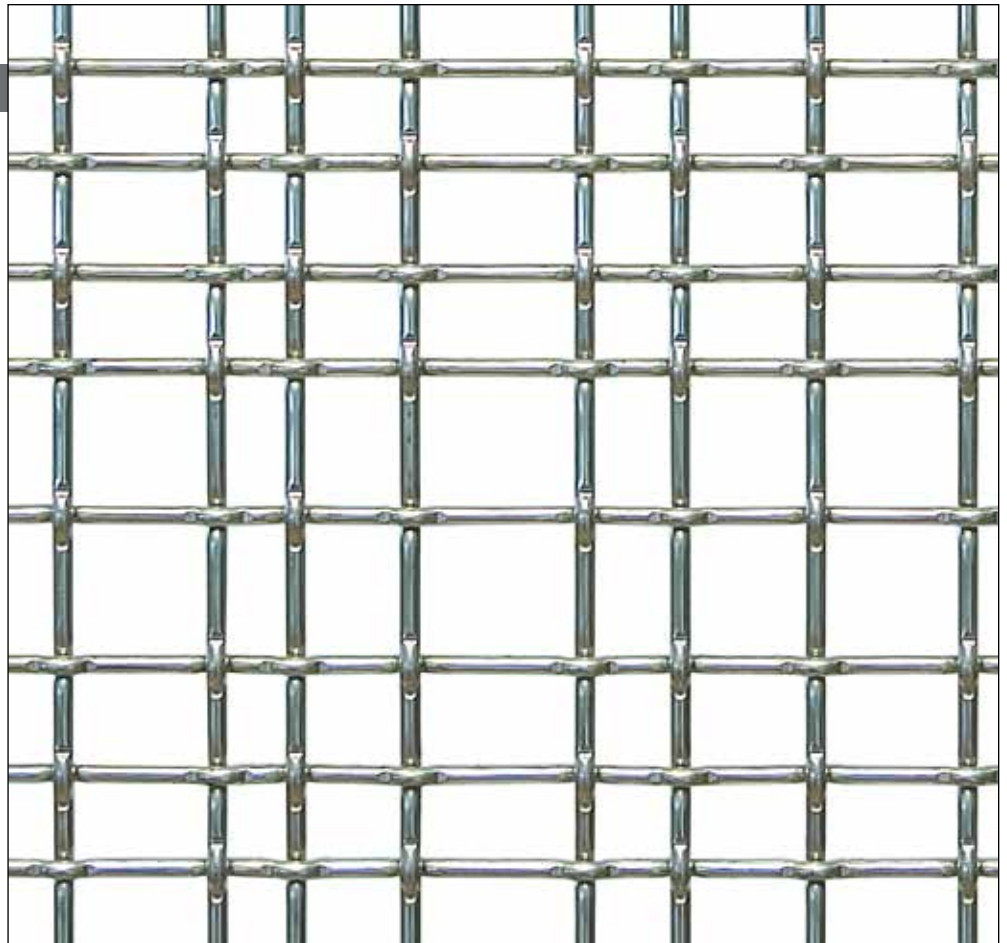
HASHTAG

RIGID MESH		
Open Area	45%	
Weight in SS	1.37 lbs/SF	6.68 kg/m ²
Thickness	0.102 inches	2.6 mm
Max Width	114 inches	2.90 meters
Max Length	50 feet	15.24 meters
Width Tolerance	+/- 0.25 inches	+/- 6 mm
Length Tolerance	+/- 0.25 inches	+/- 6 mm

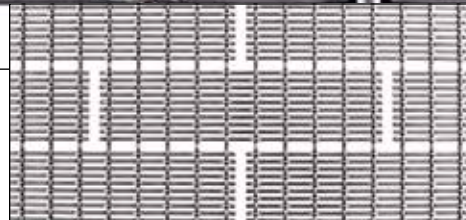
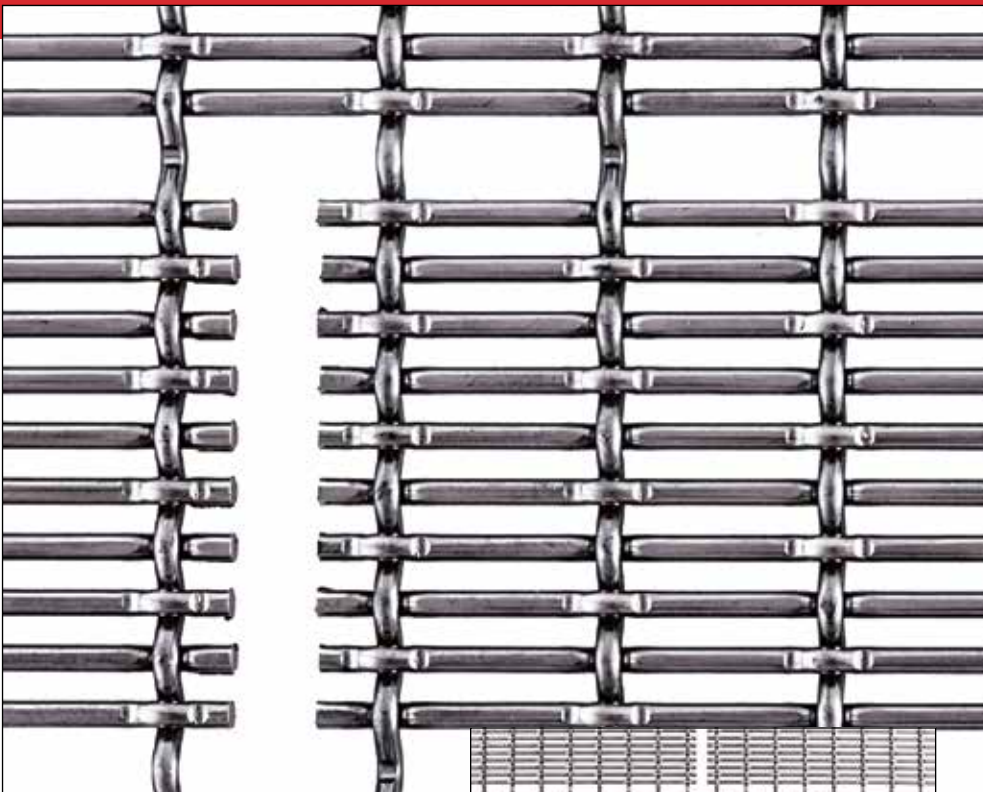


CHAOS

RIGID MESH		
Open Area	69%	
Weight in SS	1.38 lbs/SF	6.74 kg/m ²
Thickness	0.255 inches	6.5 mm
Max Width	105 inches	2.66 meters
Max Length	50 feet	15.24 meters
Width Tolerance	+/- 0.25 inches	+/- 6 mm
Length Tolerance	+/- 0.25 inches	+/- 6 mm

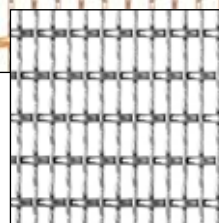
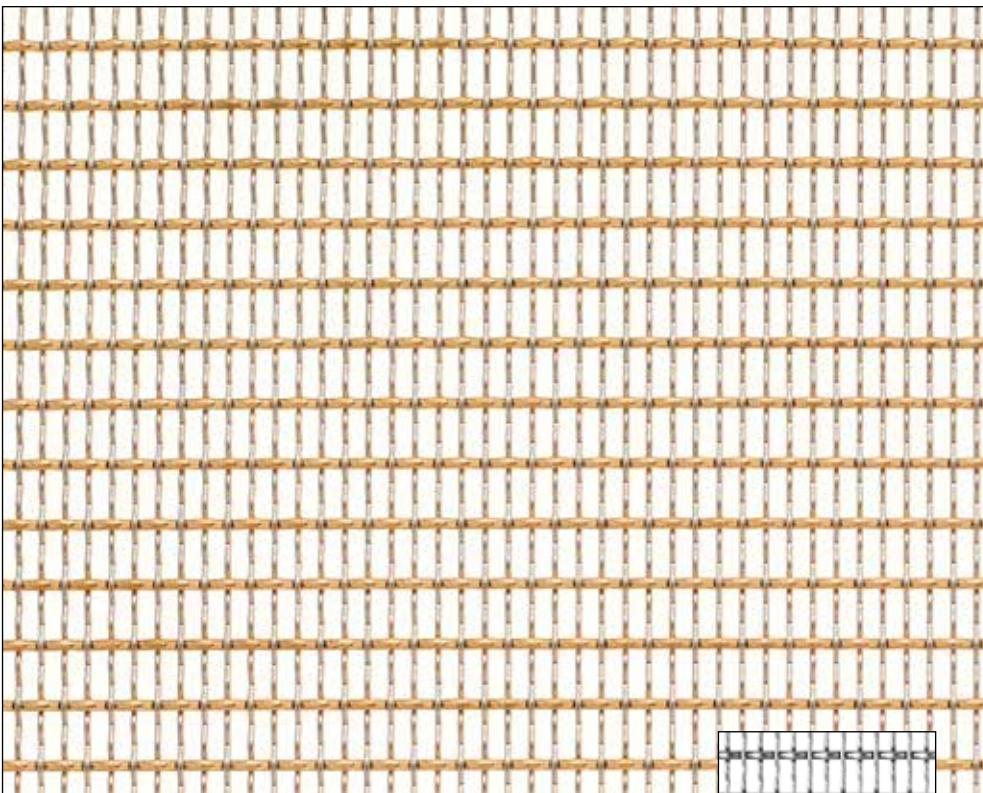


BRICK



WIDE VIEW

RIGID MESH		
Open Area	50%	
Weight in SS	2.30 lbs/SF	11.23 kg/m ²
Thickness	0.242 inches	6.1 mm
Max Width	114 inches	2.9 meters
Max Length	5 feet	1.524 meters
Width Tolerance	+/- 0.5 inches	+/- 13 mm
Length Tolerance	+/- 0.25 inches	+/- 6 mm



BEAD 881SS

BEAD

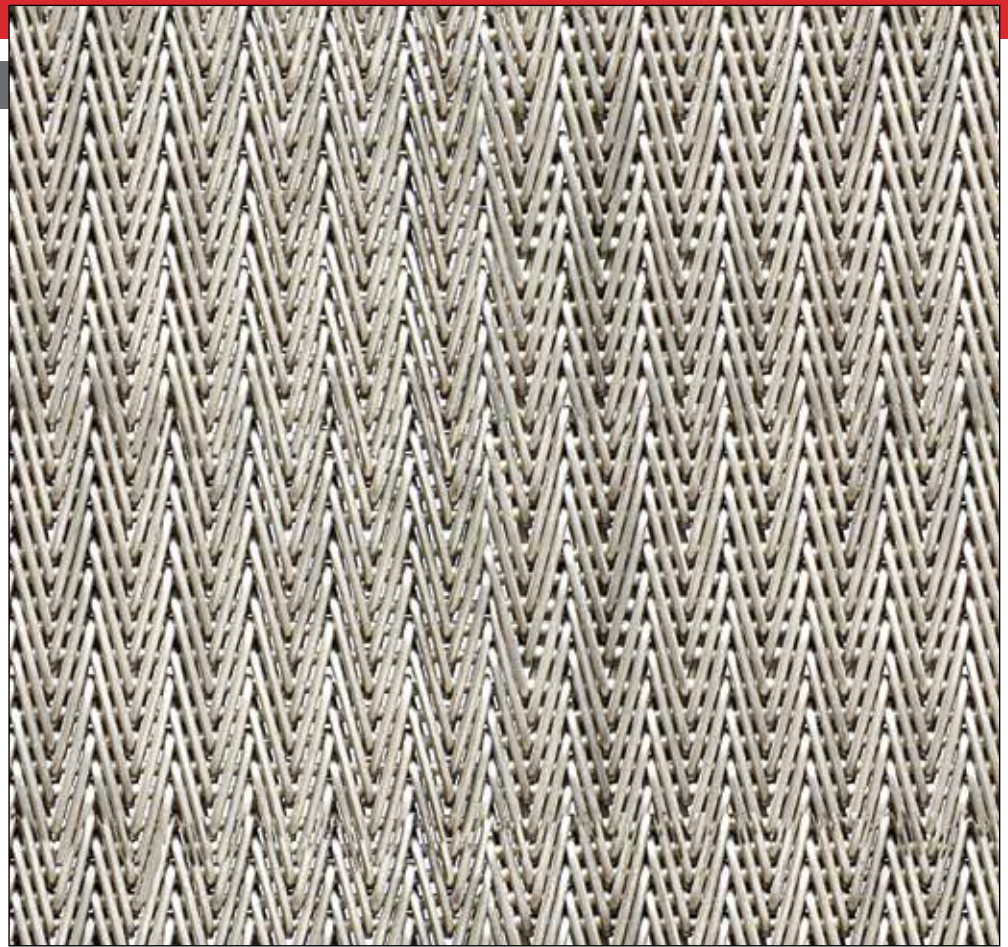
RIGID MESH		
Open Area	53.9%	
Weight in SS	.84 lbs/SF	9.04 kg/m ²
Thickness	0.98 inches	2.5 mm
Max Width	70 inches	1.78 meters
Max Length	14 feet	4.26 meters
Width Tolerance	+/- 0.125 inches	+/- 3 mm
Length Tolerance	+/- 0.125 inches	+/- 3 mm

Large Photo: Bead 881SB

MESH PATTERNS

RITZ

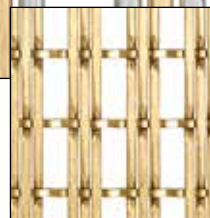
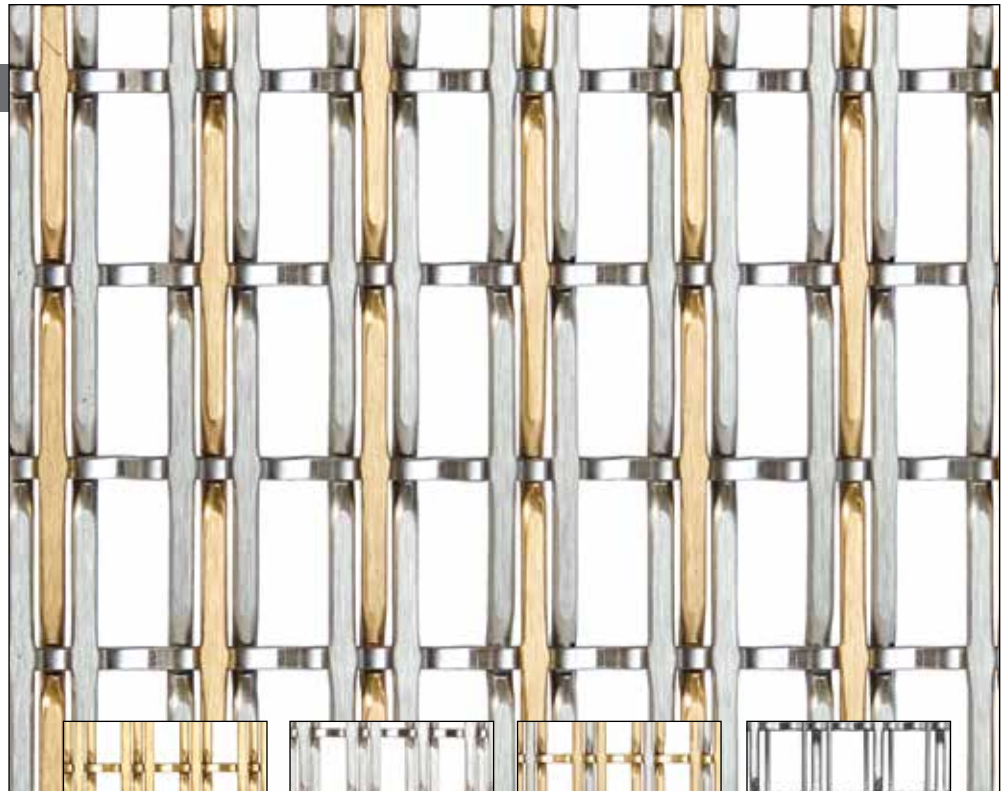
FLEXIBLE MESH		
Open Area	1%	
Weight in SS	3.90 lbs/SF	19.04 kg/m ²
Thickness	0.300 inches	7.6 mm
Max Width	120 inches	3.05 meters
Max Length	100 feet	30.48 meters
Width Tolerance	+/- 0.375 inches	+/- 10 mm
Length Tolerance	+/- 0.25 inches	+/- 6 mm



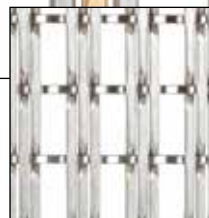
INFINITY

RIGID MESH		
Open Area	58%	
Weight in SS	2.00 lbs/SF	9.76 kg/m ²
Thickness	0.225 inches	5.7 mm
Max Width	60 inches	1.52 meters
Max Length	118 inches	2.997 meters
Width Tolerance	+/- .125 inches	+/- 3 mm
Length Tolerance	0.125 inches	+/- 3 mm

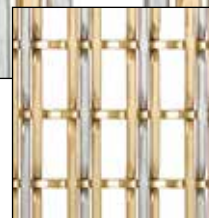
Large Photo: Infinity 507A



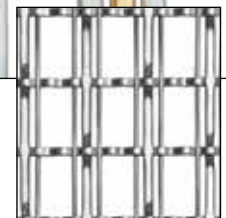
INFINITY 504A



INFINITY 506A

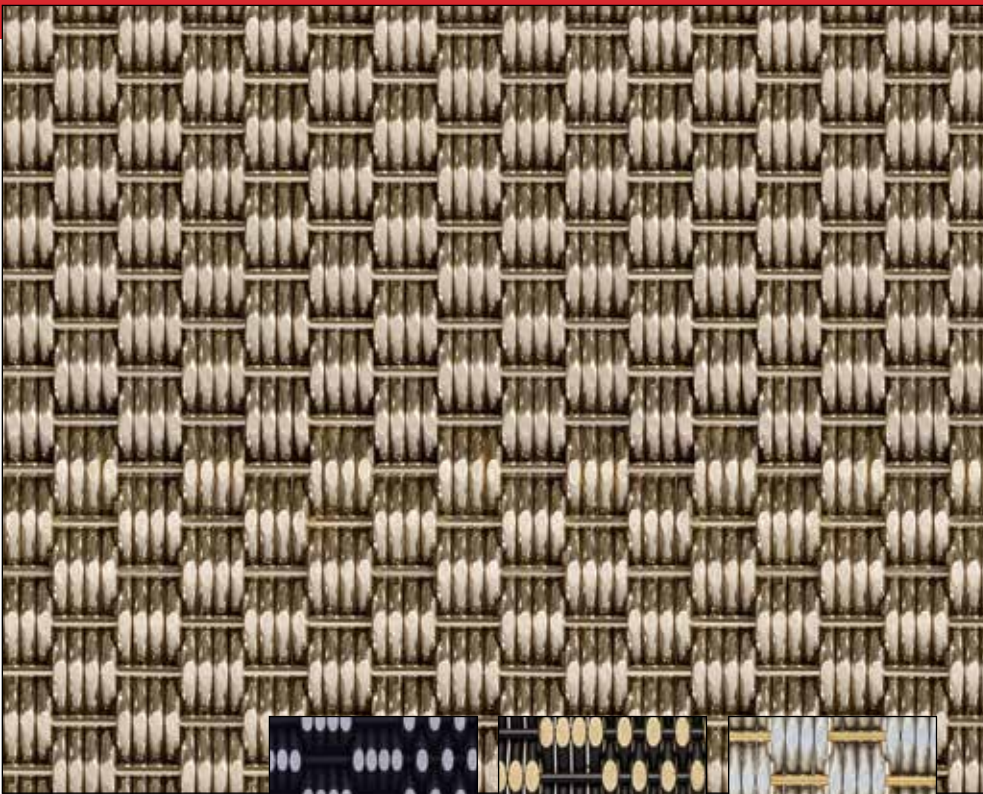


INFINITY 508A



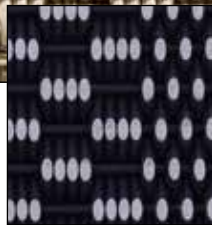
INFINITY 510A

TIDAL



RIGID MESH		
Open Area	0%	
Weight in SS	3.70 lbs/SF	18.06 kg/m ²
Thickness	0.193 inches	4.9 mm
Max Width	60 inches	1.52 meters
Max Length	118 inches	2.997 meters
Width Tolerance	+/- 0.125 inches	+/- 3 mm
Length Tolerance	+/- 0.125 inches	+/- 3 mm

Large Photo: Tidal 96A



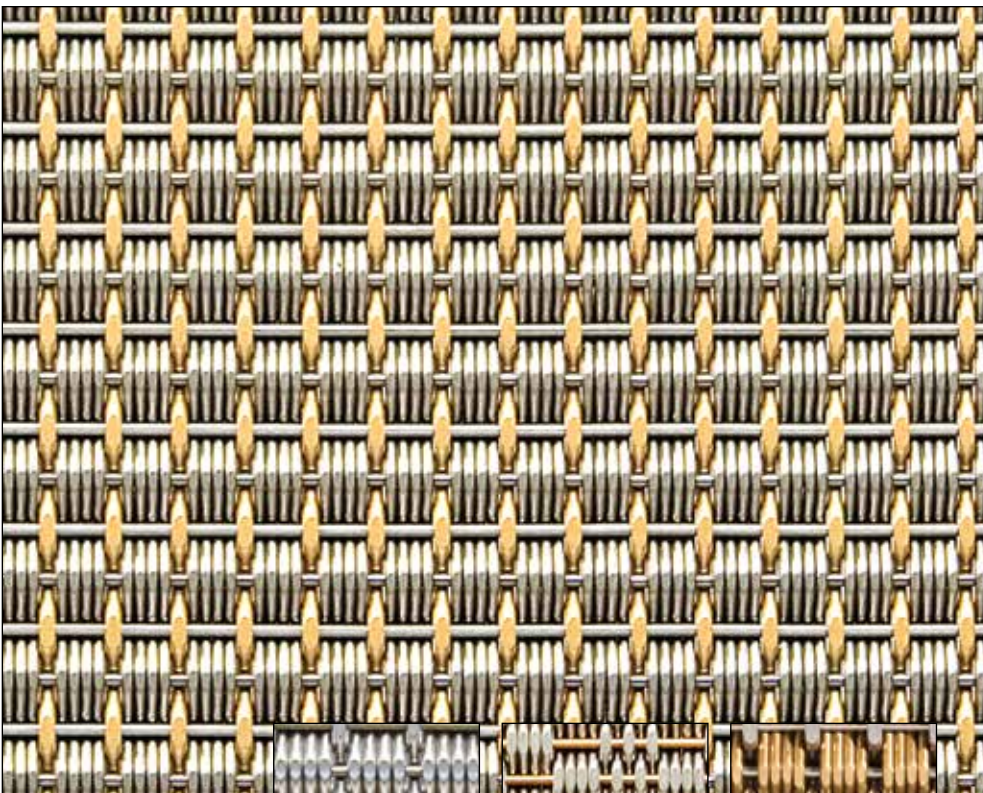
TIDAL 79B



TIDAL 79BB



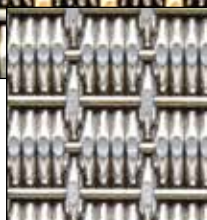
TIDAL 108A



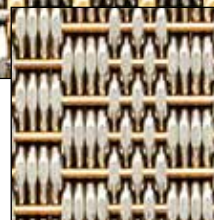
CIRCUIT

RIGID MESH		
Open Area	0%	
Weight in SS	3.38 lbs/SF	16.50 kg/m ²
Thickness	0.196 inches	5.0 mm
Max Width	60 inches	1.52 meters
Max Length	118 inches	2.997 meters
Width Tolerance	+/- 0.125 inches	+/- 3 mm
Length Tolerance	+/- 0.125 inches	+/- 3 mm

Large Photo: Circuit 114A



CIRCUIT 105A



CIRCUIT 113A



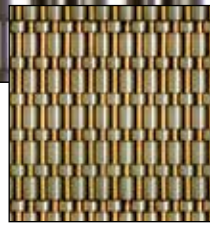
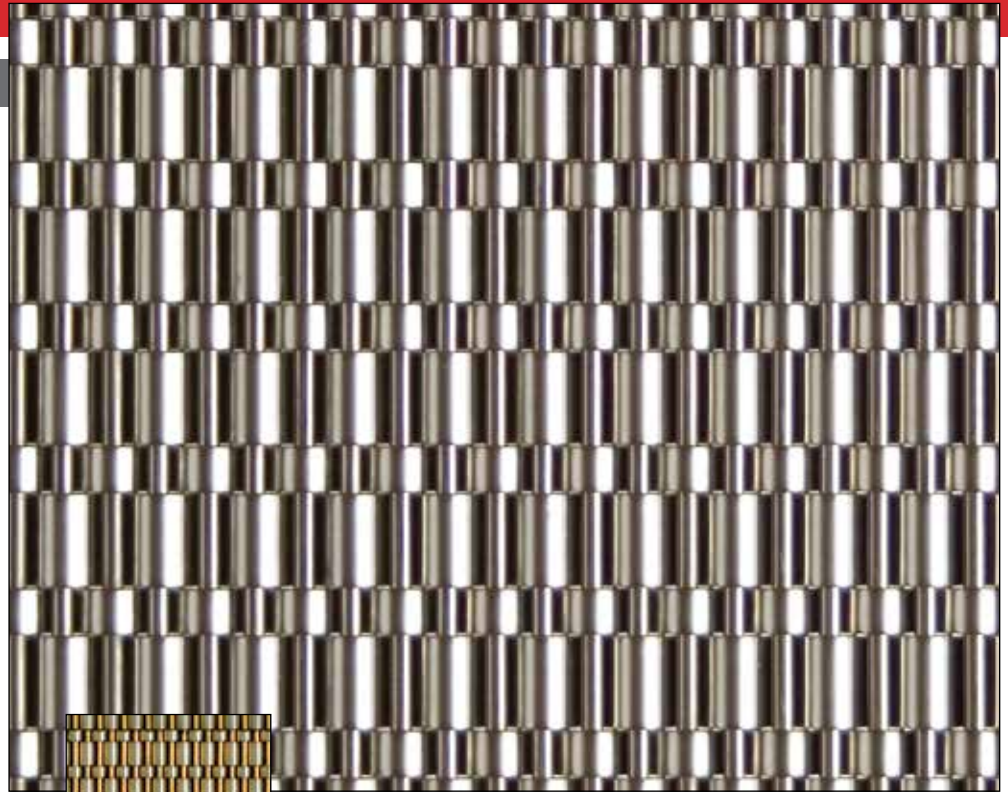
CIRCUIT 141A

MESH PATTERNS

CHANNEL

RIGID MESH		
Open Area	0%	
Weight in SS	4.00 lbs/SF	19.53 kg/m ²
Thickness	0.215 inches	5.5 mm
Max Width	118 inches	2.997 meters
Max Length	12 feet	3.65 meters
Width Tolerance	+/- 0.25 inches	+/- 6 mm
Length Tolerance	+/- 0.375 inches	+/- 10 mm

Large Photo: Channel 29SS

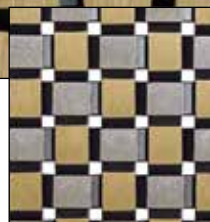
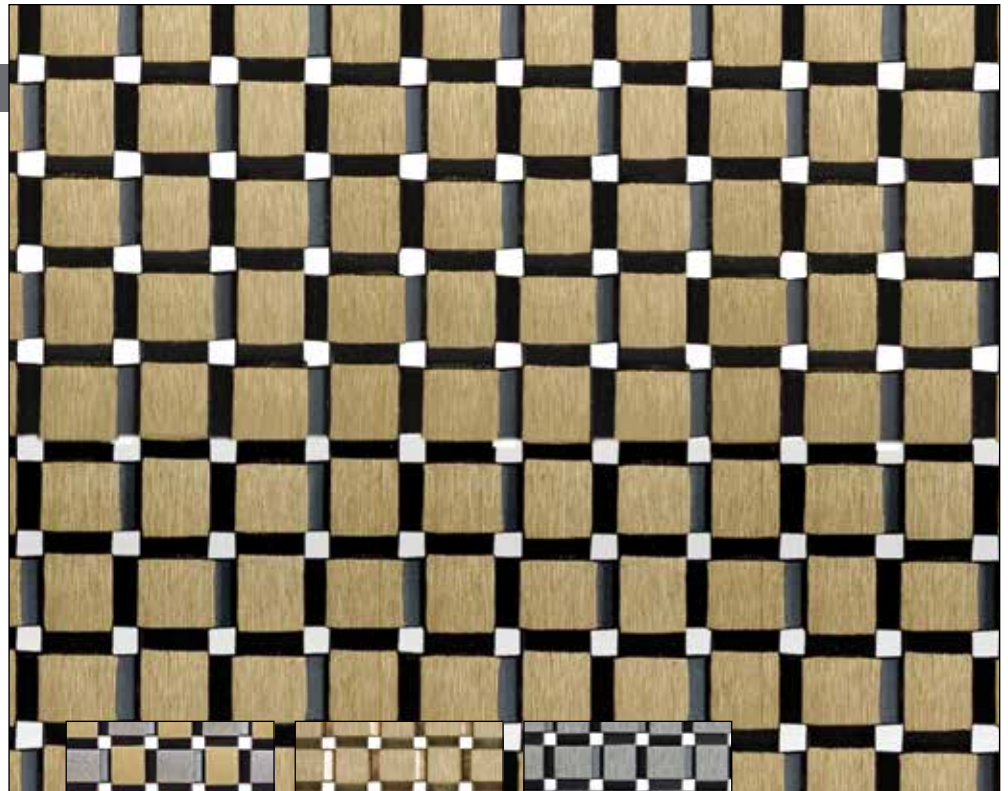


CHANNEL 29K

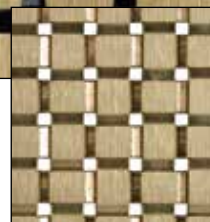
TILE

RIGID MESH		
Open Area	6%	
Weight in SS	3.90 lbs/SF	19.04 kg/m ²
Thickness	0.135 inches	3.4 mm
Max Width	60 inches	1.52 meters
Max Length	118 inches	2.997 meters
Width Tolerance	+/- .375 inches	+/- 10 mm
Length Tolerance	+/- .375 inches	+/- 10 mm

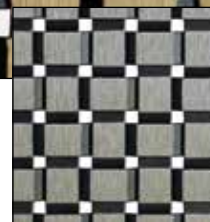
Large Photo: Tile 50B



TILE 35B

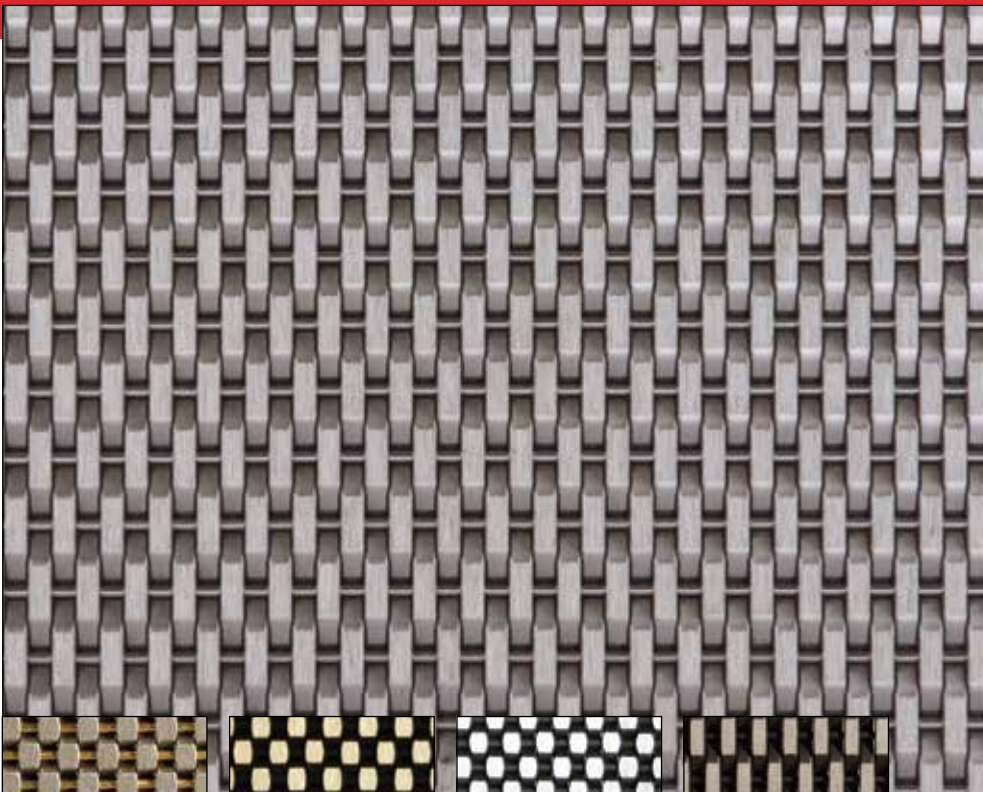


TILE 50A



TILE 52B

SAWGRASS



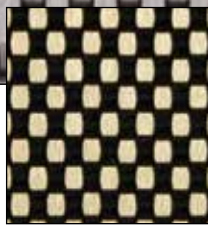
RIGID MESH

Open Area	0%	
Weight in SS	3.57 lbs/SF	17.43 kg/m ²
Thickness	0.130 inches	3.3 mm
Max Width	60 inches	1.52 meters
Max Length	118 inches	2.997 meters
Width Tolerance	+/- .125 inches	+/- 3 mm
Length Tolerance	+/- .125 inches	+/- 3 mm

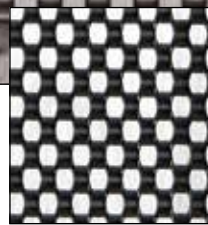
Large Photo: Sawgrass 88A



SAWGRASS 32A



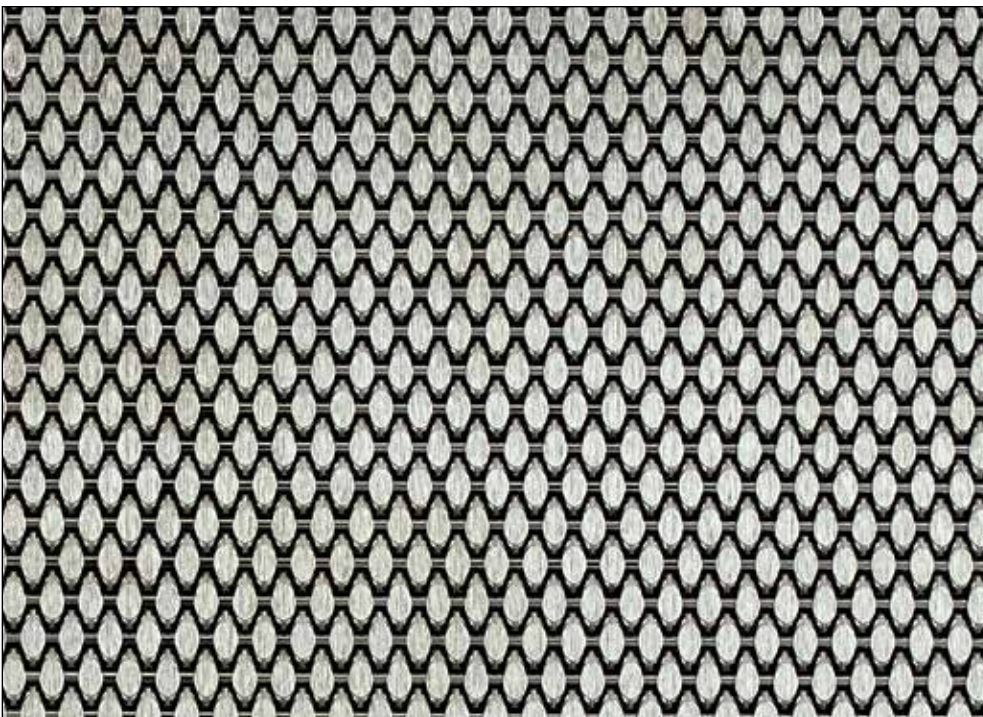
SAWGRASS 33B



SAWGRASS 51B



SAWGRASS 88B



STIPPLE

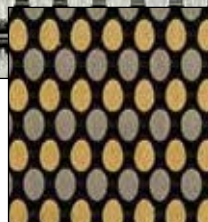
RIGID MESH

Open Area	0%	
Weight in SS	3.57 lbs/SF	17.43 kg/m ²
Thickness	0.132 inches	3.4 mm
Max Width	60 inches	1.52 meters
Max Length	118 inches	2.997 meters
Width Tolerance	+/- .125 inches	+/- 3 mm
Length Tolerance	+/- .125 inches	+/- 3 mm

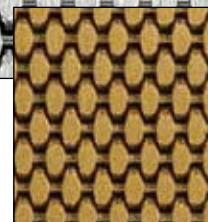
Large Photo: Stipple 19A



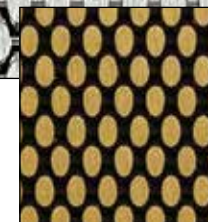
STIPPLE 11A



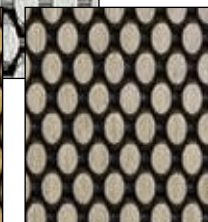
STIPPLE 11B



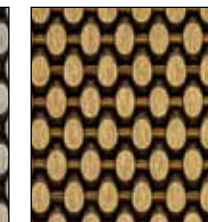
STIPPLE 12A



STIPPLE 12B



STIPPLE 19B



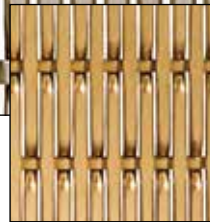
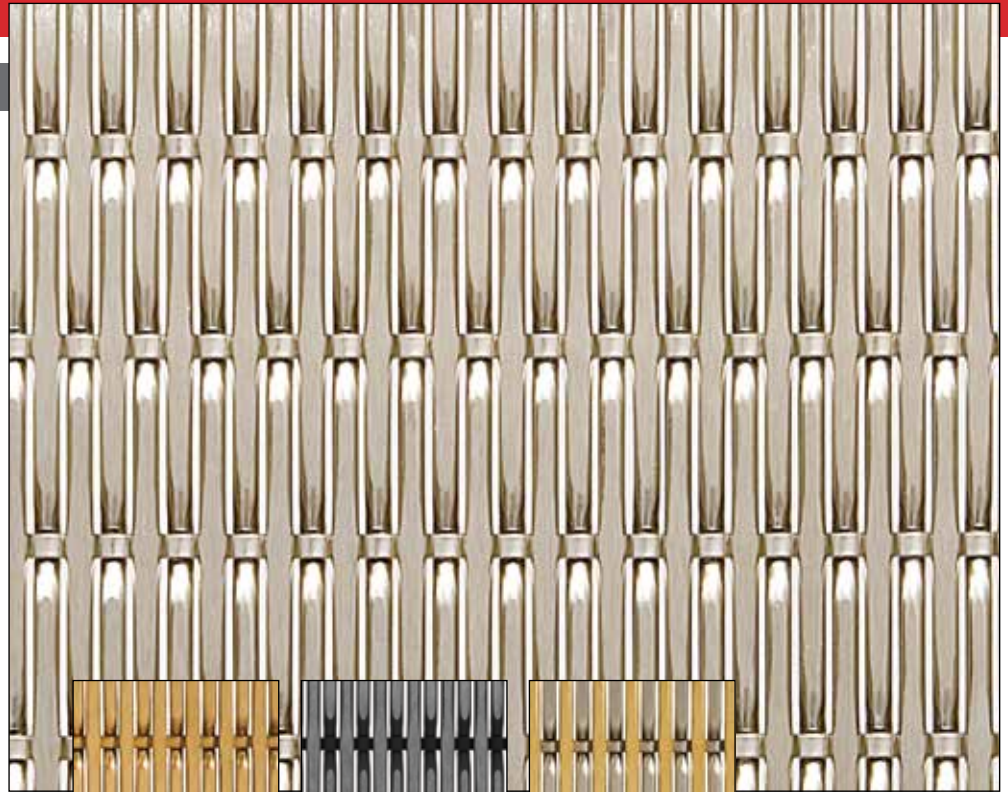
STIPPLE 19H

MESH PATTERNS

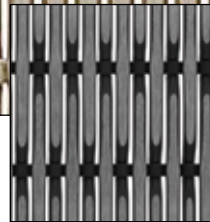
PLAZA

RIGID MESH		
Open Area	18%	
Weight in SS	3.70 lbs/SF	18.06 kg/m ²
Thickness	0.225 inches	5.7 mm
Max Width	60 inches	1.52 meters
Max Length	118 inches	2.997 meters
Width Tolerance	+/- 0.25 inches	+/- 6 mm
Length Tolerance	+/- 0.25 inches	+/- 6 mm

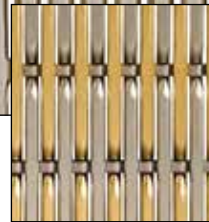
Large Photo: Plaza 75A



PLAZA 70A



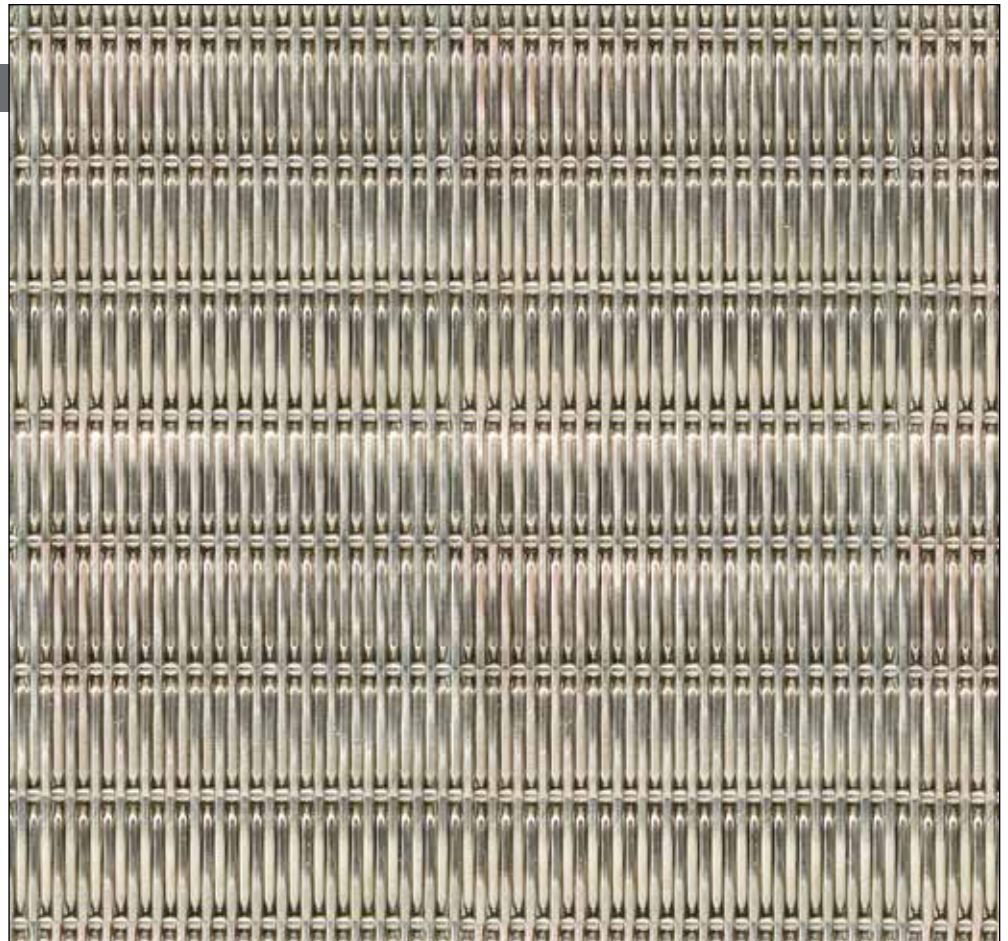
PLAZA 75B



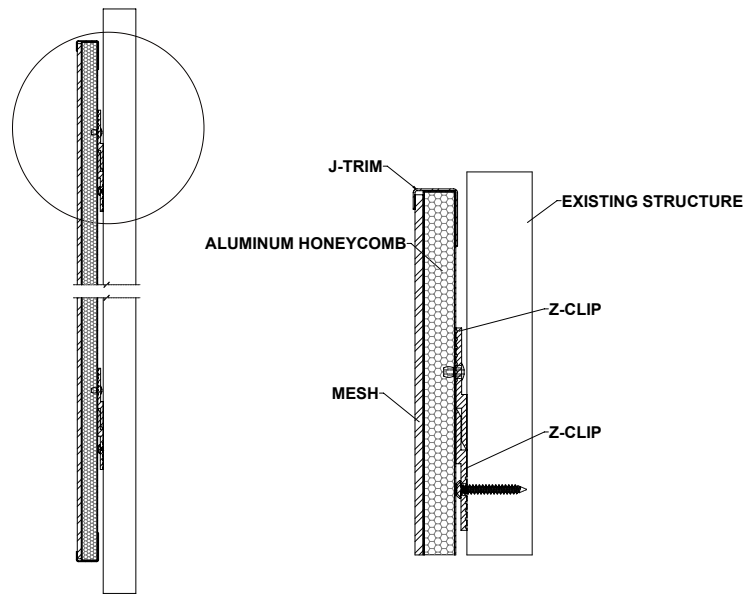
PLAZA 78A

VILLA

RIGID MESH		
Open Area	0%	
Weight in SS	2.10 lbs/SF	10.25 kg/m ²
Thickness	0.155 inches	3.9 mm
Max Width	144 inches	3.66 meters
Max Length	10 feet	3.05 meters
Width Tolerance	+/- 0.125 inches	+/- 3 mm
Length Tolerance	+/- 0.25 inches	+/- 6 mm

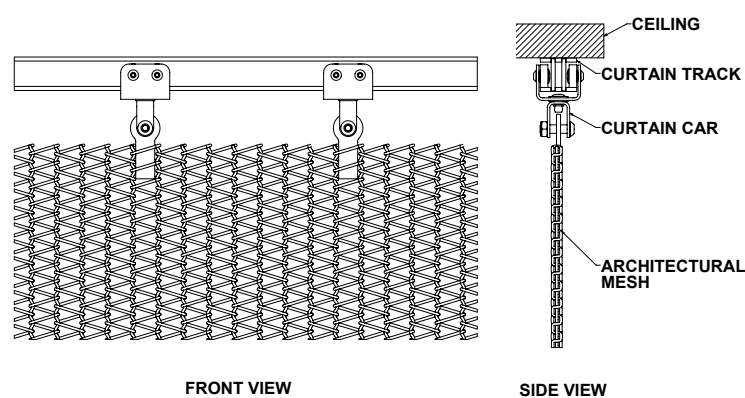
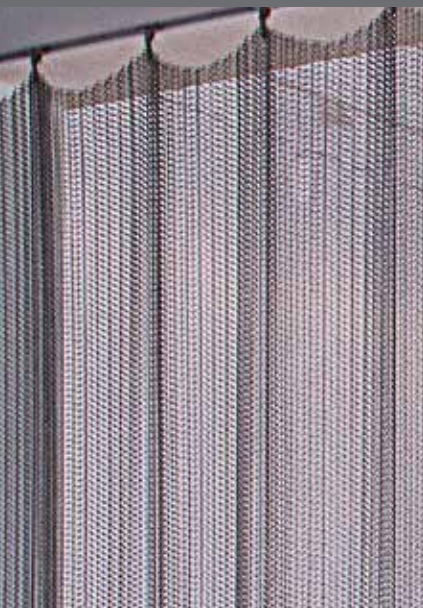


PANEL



Panel attachment hardware fastens closed metal fabric to a substrate such as Aluminum Honeycomb Backer. Z-clips (provided by others) can be used to join panels to the substructure.

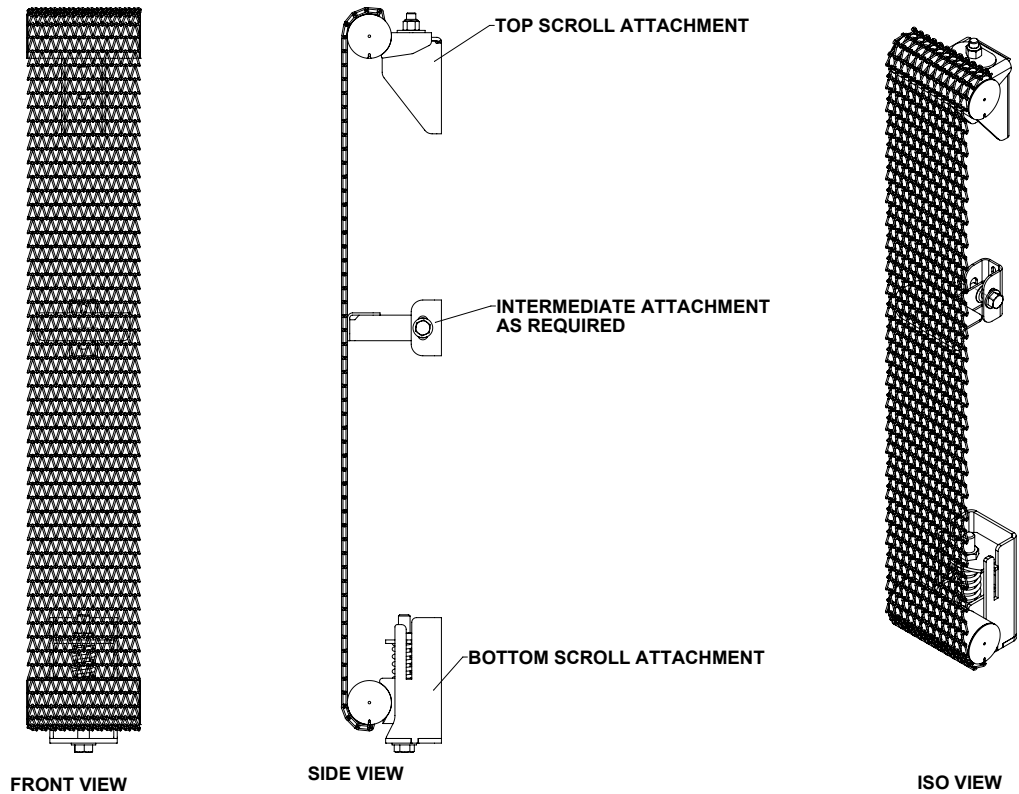
CURTAIN



Curtain attachment hardware attaches flexible metal fabric to carriers and permits it to roll smoothly along the track length as a window treatment or draping space divider. Flexible metal fabrics are hung sideways to maximize the draping effect.

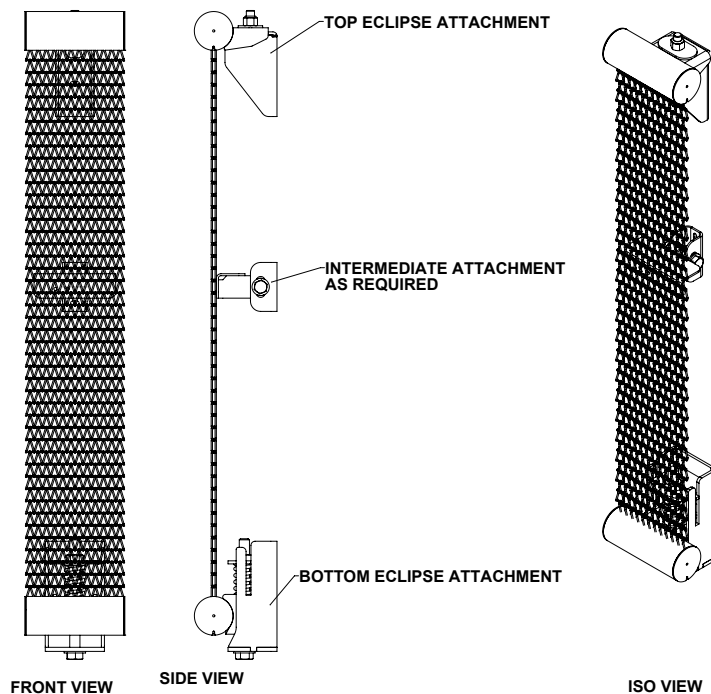
SCROLL

Scroll tension attachment hardware keeps the focus on the metal fabric by hiding the attachment behind it. Scroll conceals the bracket that attaches to the structural support. Scroll uniquely grips the metal fabric, holding it in tension. Scroll is appropriate for lengths of metal fabric up to 100'.

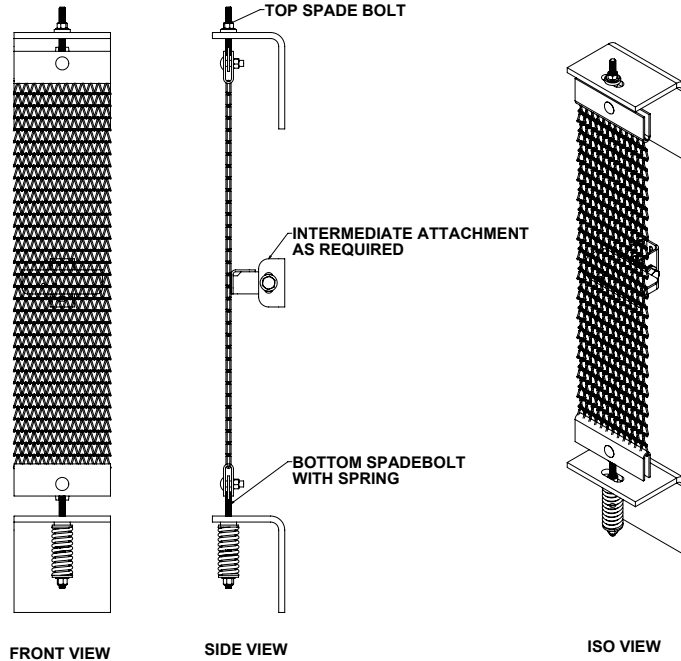


ECLIPSE™

Eclipse tension attachment hardware provides tailored edges for expanses of flexible metal fabric. Elegant, custom-cut apertures receive the metal fabric ends in tubing that is integrated into a bracket and structural support design. The tube provides a visual reveal between panel lengths, and tube sizes may vary to emphasize or de-emphasize the attachment. Eclipse is appropriate for lengths of metal fabric up to 100'.



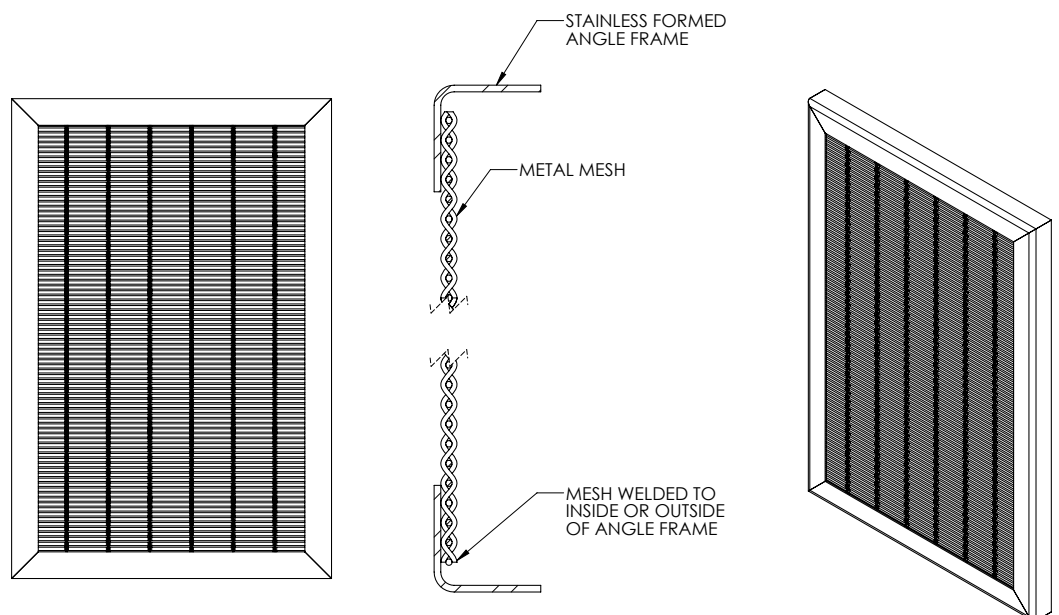
EYEBOLT



The Eyebolt attachment is a less elegant but lower cost mesh mounting system. Contact your Cambridge Architectural representative for weight load limitations.

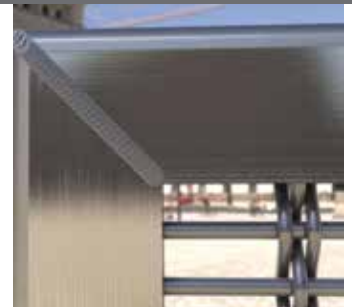
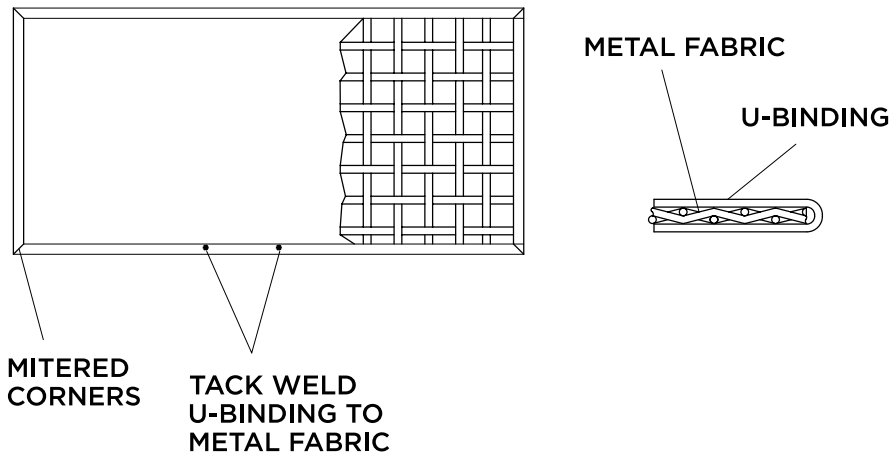
ANGLE FRAME

Angle Frame attachment system is designed to provide mounting for rigid mesh in applications where cost-effective panel systems are required. Utilizing a formed stainless steel angle as the structural element, the mesh is tack welded either on the interior of the frame, leaving a border; or it can be welded to the outside of the frame to conceal the angle. The steel angle itself can be left unfinished; or exposed surfaces can be polished and finished.

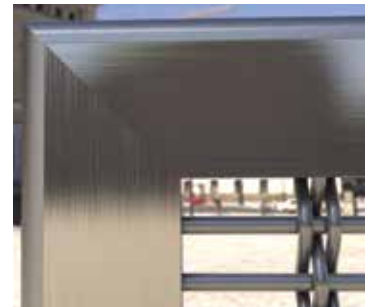


U BINDING

With U Binding attachment hardware, metal fabric is tack welded to a u-binding frame with mitered corners that are welded and ground smooth for a brushed finish.



WELD & CLEAN



A1 FINISH
(WELD & BRUSHED)

ENGINEERING AND PROJECT MANAGEMENT SUPPORT

Cambridge's in-house engineering support and mesh system design sets us apart from other metal fabricators. From early concept and construction documents to final shop drawings, our engineers and project managers have exceptional experience in the art and science of architectural mesh systems.

Our support and resources include:

CONCEPTUAL LEVEL AND EARLY DESIGN

- Assistance selecting proper mesh, materials, and attachment options to meet project objectives
- Preliminary loading calculations based on specifications, attachment systems, sizes, and site attributes (such as wind and ice loads)
- Sample drawings, sketches and information on specific mesh and attachments
- Conceptual budget estimates for mesh and attachments

DESIGN DEVELOPMENT AND CONSTRUCTION DOCUMENT

- Detail and specification development
- System design and preliminary engineering calculations
- Web-based and in-person design meetings

UNDER-CONTRACT ENGINEERING

- Mock-up design and fabrication
- Shop drawing development and submissions under licensed PE
- Customized installation and maintenance instructions
- On-site meetings to support final designs and installation
- Studies and submissions for safety, wind or jurisdictional requirements
- Reports and submission for Green Building, other certification systems



Billerica Memorial High School Stadium

Billerica, Massachusetts

Architect:

Perkins&Will

General Contractor:

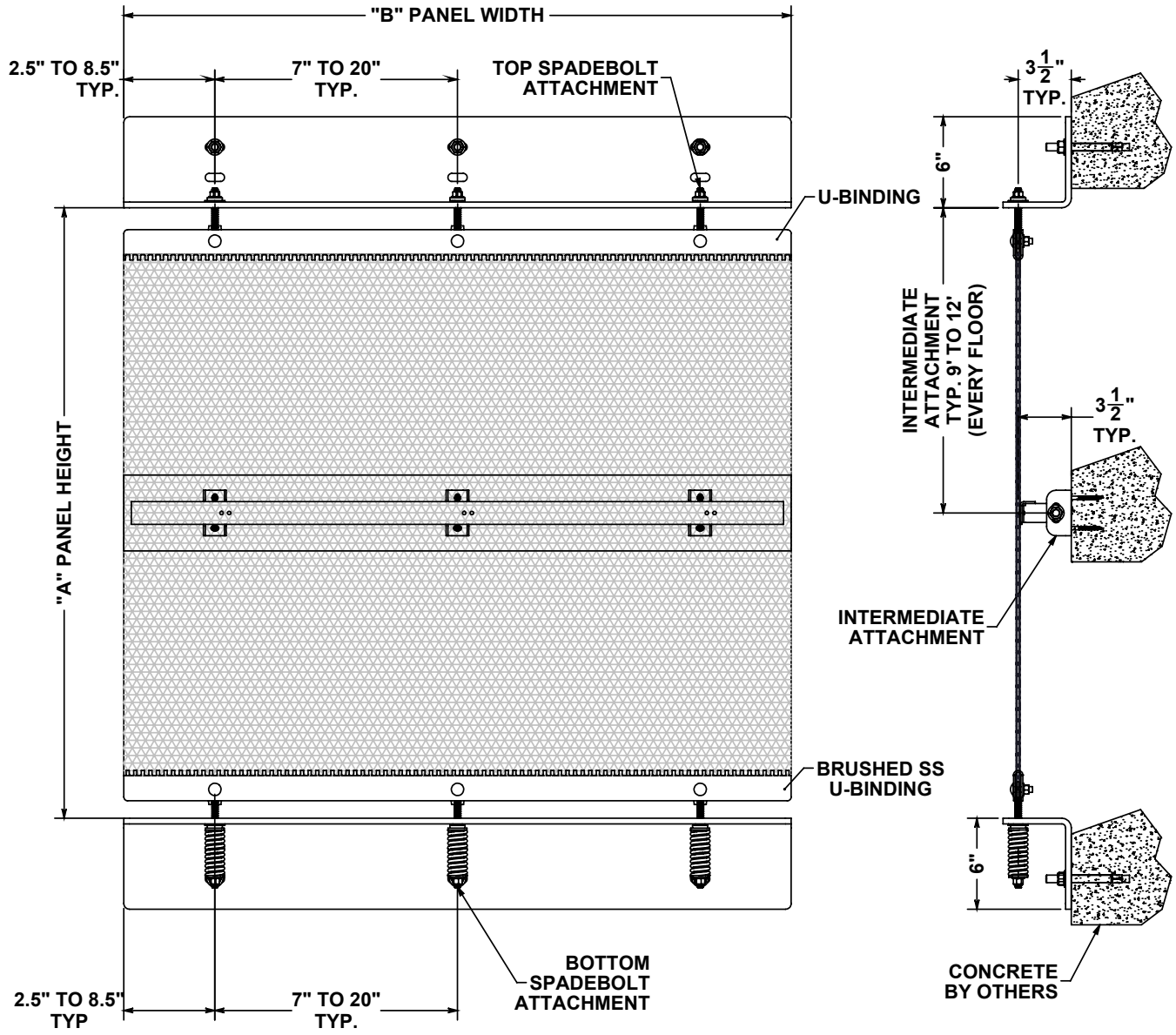
Shawmut Design & Construction

Cambridge Mesh System

Shade Mesh Eyebolt Attachment

Magothy Pre-Engineered System

MAGOTHY – Exterior Tensioned Screen



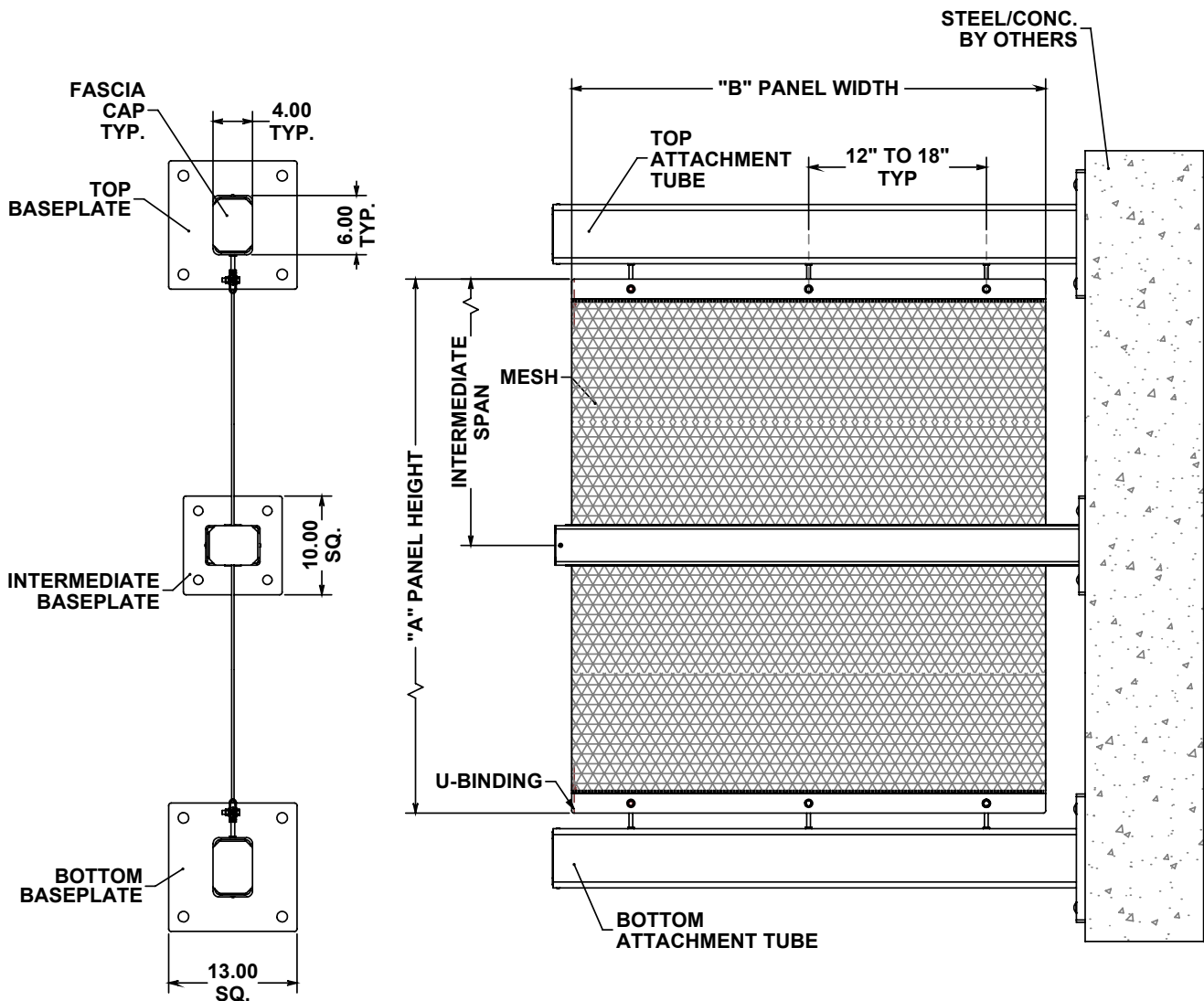
MAGOTHY STANDARD SIZES			
Height	Width	Panel Type	Intermediate Span
Up to 60'	Up to 15'	Full Height	No more than 12'

MAGOTHY SYSTEM DESIGN ATTRIBUTES:

- Weave Type:** Balance Weave
- Attachment Type:** Full Height Spring Tensioned
- Primary Vertical Load:** Top & Bottom Angle Attachment

MAGOTHY SYSTEM COMPONENTS	
Mesh Patterns	Mid-Balance
	Mid-Shade
	Scale
	Huron
	Cubist
Spadebolt Material	T316 Stainless Steel
Binding Material	T316 Stainless Steel
Angle Material	Galvanized or T316 SS
Structure Material	Concrete
Hardware Material	18-8 Stainless Steel PDF for steel attachment available

SEVERN - Vertical Solar Shade Fin



SEVERN STANDARD SIZES			
Height	Width	Panel Type	Intermediate Span
Max 20'	Max 4'	Full Width	None
Max 65'	Max 4'	Full Width	20' Max

SEVERN SYSTEM COMPONENTS	
Mesh Patterns	Mid-Balance
	Mid-Shade
	Scale
	Huron
	Cubist
Spadebolt Material	T316 Stainless Steel
Binding Material	T316 Stainless Steel
Structure Material	Galvanized, Powder Coated, or T304 SS
Hardware Material	18-8 Stainless Steel

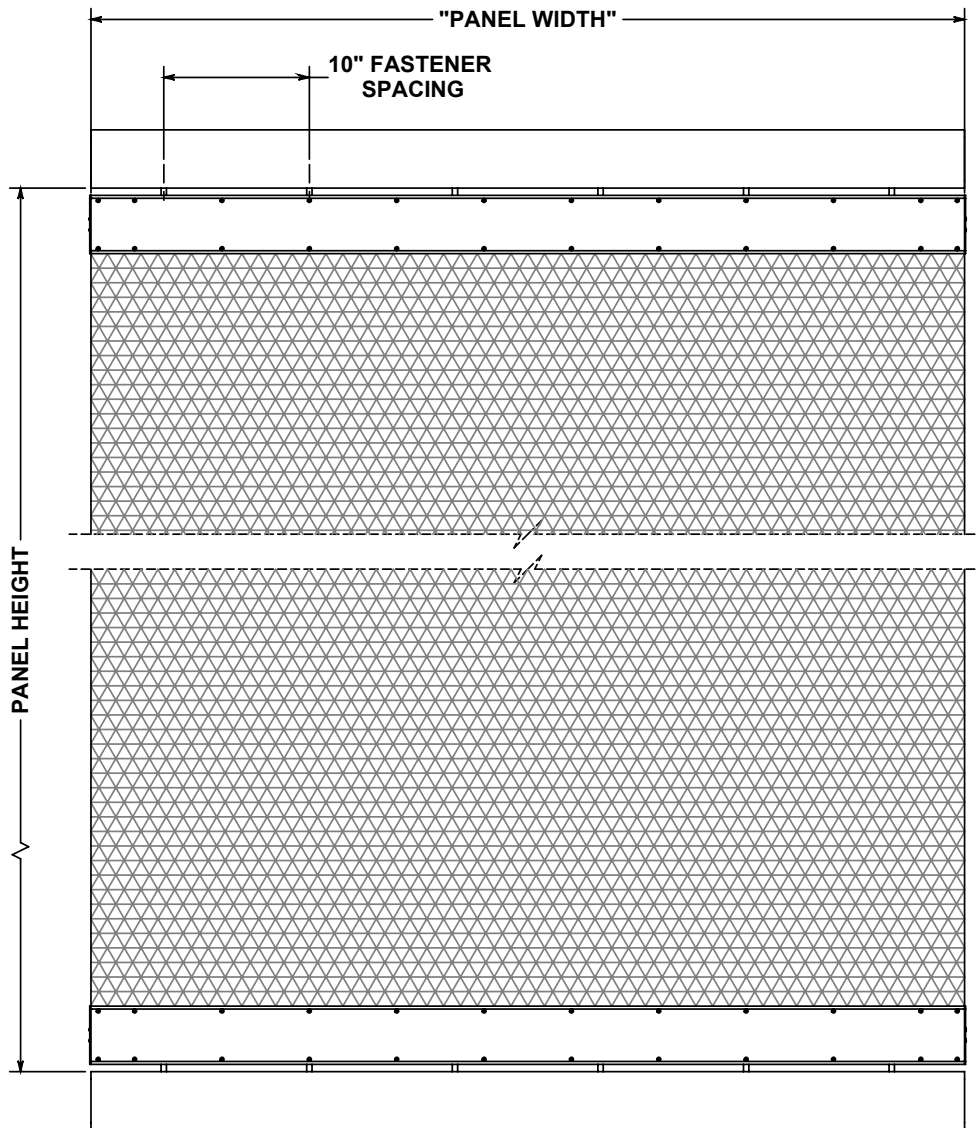
SEVERN SYSTEM DESIGN ATTRIBUTES:

Weave Type: Balance Weave

Attachment Type: Full Height Spring Tensioned

Primary Vertical Load: Top & Bottom Baseplate Attachment

POTOMAC – Exterior Tensioned Panel



POTOMAC STANDARD SIZES			
Width	Length	Panel Type	Intermediate Span
Up to 15'	Up to 15'	Full Height	No Intermediates

POTOMAC SYSTEM DESIGN ATTRIBUTES:

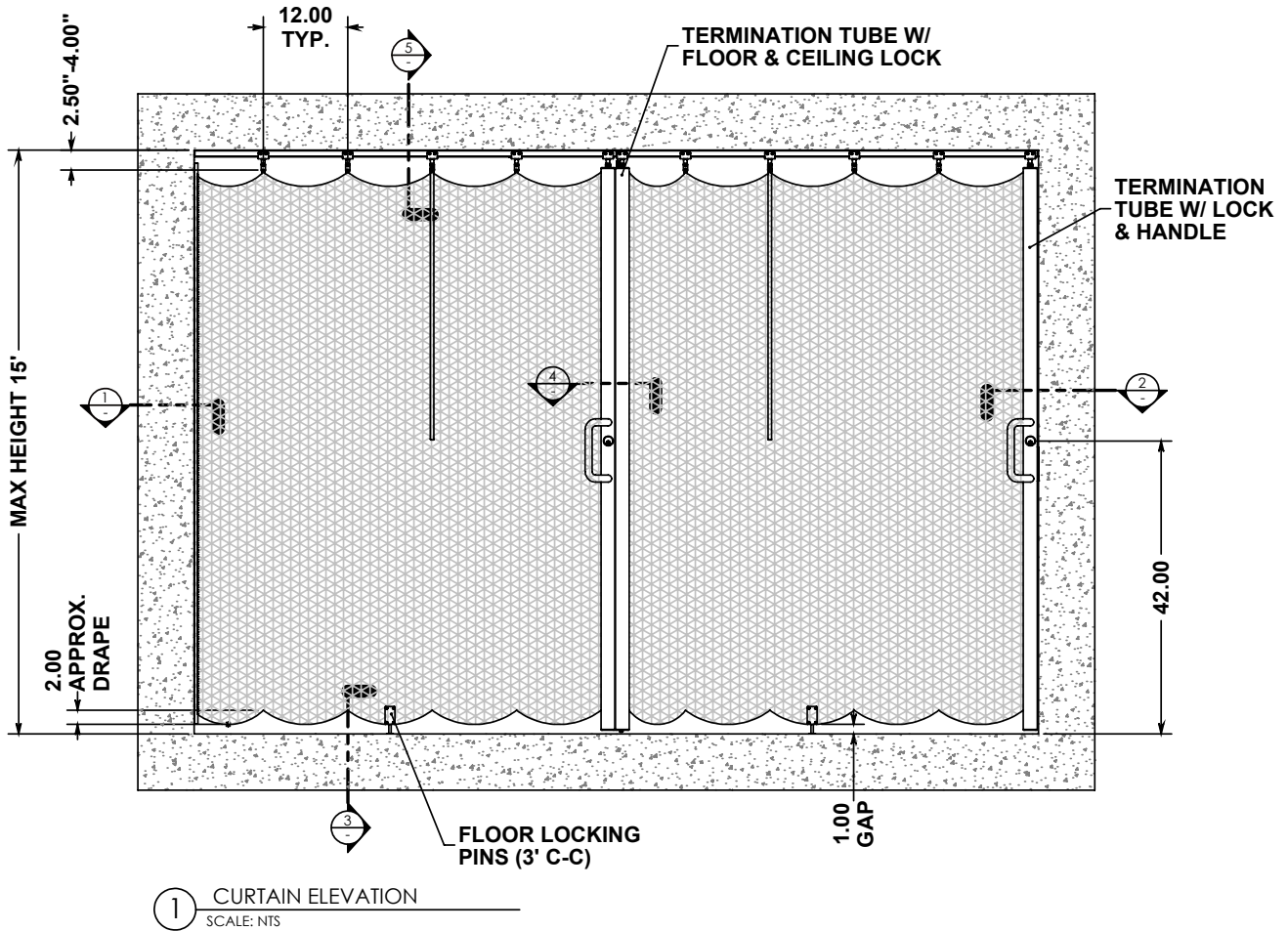
Weave Type: Balance Weave

Attachment Type: Full Height Tensioned

Primary Vertical Load: Top & Bottom Attachment

POTOMAC SYSTEM COMPONENTS	
Mesh Patterns	Mid-Balance
	Mid-Shade
	Scale
	Huron
	Cubist
	Stripe
Tube Material	Galvanized or T316 SS
Hardware Material	18-8 Stainless Steel

MIDDLE TERMINATION TUBES ARE NOT NEEDED SHOWN FOR REFERENCE ONLY



CATALINA STANDARD SIZES		
Height	Width	Panel Type
Max 15'	Unlimited	Full Width

CATALINA SYSTEM COMPONENTS	
Mesh Patterns	Mid-Balance
	Mid-Shade
Track Material	T304 Stainless Steel
Term Tube Material	T304 Stainless Steel
Hardware Material	18-8 Stainless Steel

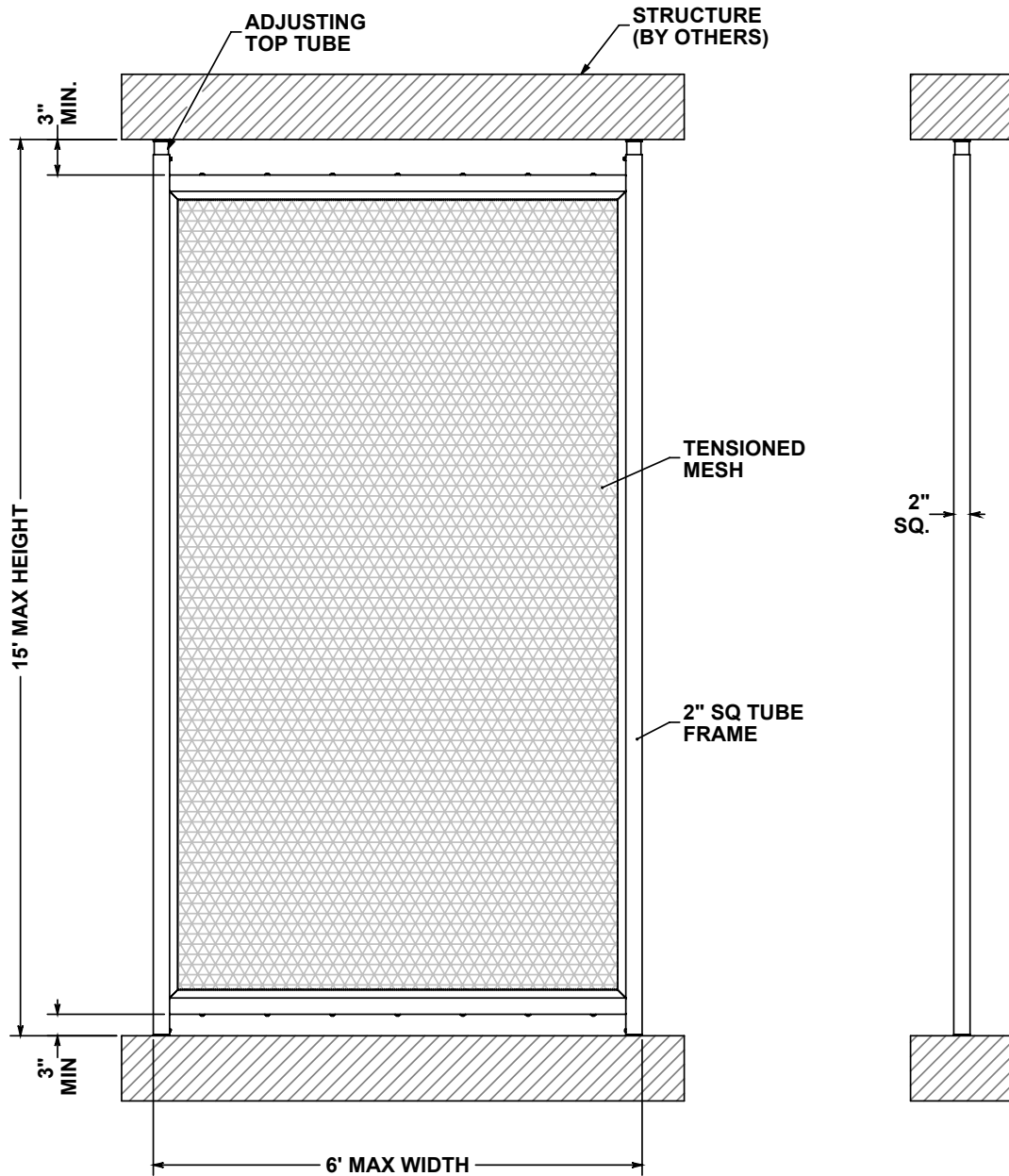
CATALINA SYSTEM DESIGN ATTRIBUTES:

Weave Type: Balance Weave

Attachment Type: Track and Pins

Primary Vertical Load: Top Track Attachment

DORAL – Framed Interior Partition



DORAL STANDARD SIZES			
Height	Width	Panel Type	Intermediate Span
Up to 15'	Up to 6'	Full Height	None

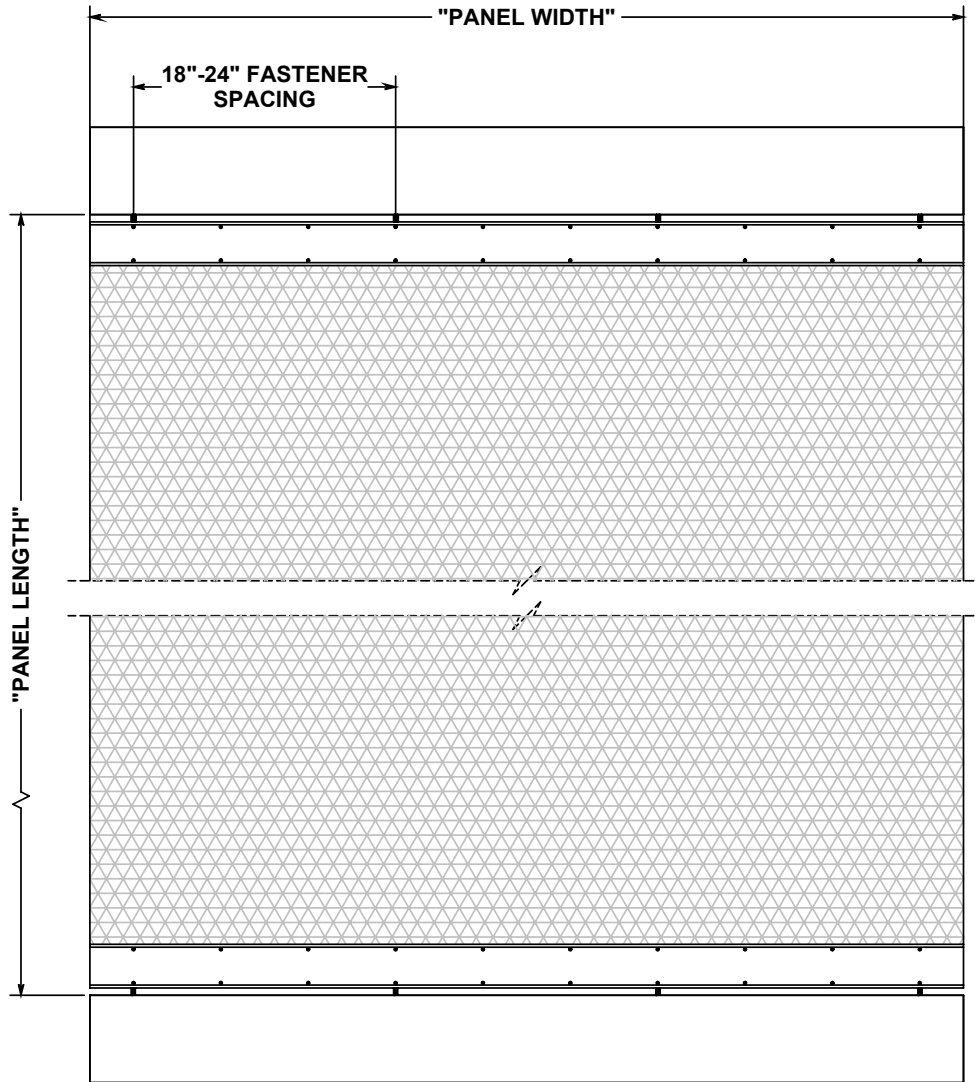
DORAL SYSTEM COMPONENTS	
Mesh Patterns	Mid-Balance
	Mid-Shade
	Huron
	Scale
	Stripe
	Cubist
Mesh Material	T304 Stainless Steel
Tube Material	T304 Stainless Steel
Hardware Material	18-8 Stainless Steel

DORAL SYSTEM DESIGN ATTRIBUTES:

Weave Type: Balance Weave

Attachment Type: Floor/Ceiling/Wall Anchor

Note: Wall Mount Option available



MOHAVE STANDARD SIZES			
Width	Length	Panel Type	Intermediate Span
Up to 15'	Up to 20'	Full Width	No Intermediates

MOHAVE SYSTEM DESIGN ATTRIBUTES:

Weave Type: Balance Weave

Attachment Type: Full Height Tensioned

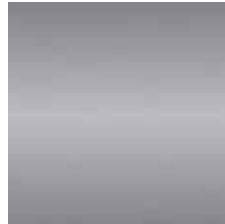
Primary Vertical Load: Top & Bottom Attachment

MOHAVE SYSTEM COMPONENTS	
Mesh Patterns	Mid-Balance
	Mid-Shade
	Scale
	Huron
	Cubist
	Stripe
Tube Material	Galvanized or T316 SS
Hardware Material	18-8 Stainless Steel

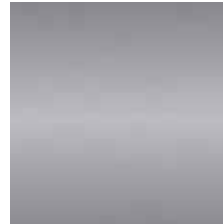
MATERIALS

Cambridge Architectural Meshes are manufactured in T304 stainless steel for interior and T316 stainless steel for exterior.

Some interior mesh series are manufactured with brass but they are as shown.



T304
Stainless Steel



T316
Stainless Steel



Brass

STANDARD FINISHES

MILL FINISH STAINLESS STEEL

Consistent silver finish created during the manufacturing of the raw material.

Applies to the wire and sheets used to make the mesh and attachment systems.

BRUSHED FINISH STAINLESS STEEL

Directionally grained surface.

Created during the product finishing steps using abrasive polishers.

Can be specified on a variety of the mesh and attachment systems.

POWDER COAT

Electrostatically applied and baked on finish.

Available in a wide variety of color and durability options.

Can be applied on a variety of mesh and attachment systems.

LACQUER

Clear coat used to reduce patina formation on copper, brass, and bronze.

Available in a wide variety of color options.

Colored lacquer and secondary sanding can produce a two tone product with a colored background and brushed finish base metal foreground on certain mesh options.

ETCHING

Pressurized media is blasted onto the mesh to create a noticeable change in the metal mesh's appearance.

Desired appearance changes can be caused by time of day, contrasts in sunlight, cloud cover, illumination, and viewing angles.



Other custom finishes can be quoted if needed.

PRODUCT CATALOG



Iron Horse Trail Pedestrian Bridge

Pleasant Hill, California

Architect: Donald MacDonald Architects, San Francisco, California



Cambridge Architectural Mesh

Customer Service: 410-228-3000 Option 2 or 866-806-2385

International: 00+1-410-901-8686

sales@cambridgearchitectural.com

cambridgearchitectural.com

The proper selection and application of products and components, including assuring that the product is safe for its intended use, are the responsibility of the customer. To view our Application Considerations, please visit <https://www.regalrexnord.com/Application-Considerations>.

To view our Standard Terms and Conditions of Sale, please visit <https://www.regalrexnord.com/Terms-and-Conditions-of-Sale> (which may redirect to other website locations based on product family).

"Regal Rexnord" is not indicative of legal entity. Refer to product purchase documentation for the applicable legal entity.

Regal Rexnord, Cambridge and Eclipse are trademarks of Regal Rexnord Corporation or one of its affiliated companies.

© 2022, 2024 Regal Rexnord Corporation, All Rights Reserved. MCC-10516E-CB-EN-US 9/24

*All third party trademarks or trade names are not owned or controlled by Regal Rexnord Corporation or its affiliates.

The logo for Regal Rexnord, featuring a stylized 'R' icon followed by the company name 'RegalRexnord' in a bold, sans-serif font.